

Farming in the digital age.



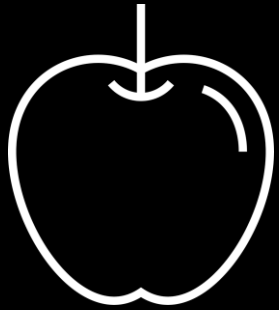
Gabriele De Propriis
CEO of GROWA.AI



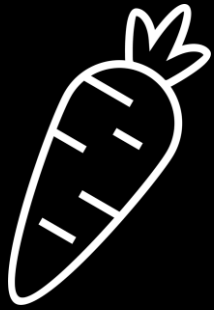
How many litres of water does a
person “eat” **daily**?

The **hidden water**

in our food



70 L



150 L



1040 L



1222 L



5100 L

SMART AGRICULTURE

A young green plant with three leaves is growing out of a glowing green circuit board. The circuit board is resting on a dark, textured surface that looks like soil or gravel. The background is dark and out of focus, showing more green foliage. The overall scene is lit with a soft green glow, emphasizing the connection between nature and technology.

The Game changer

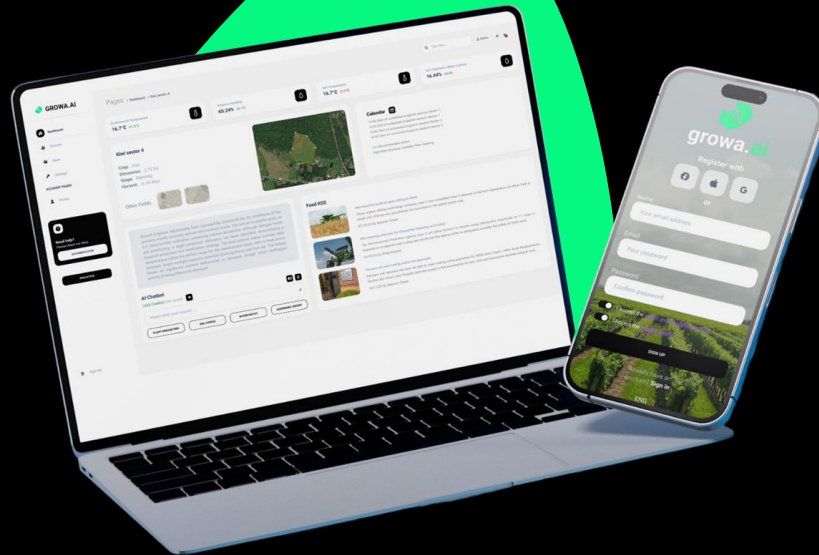
Satellite Data



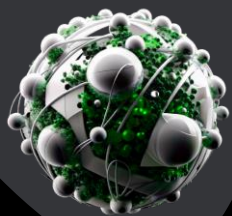
IoT Devices



SaaS



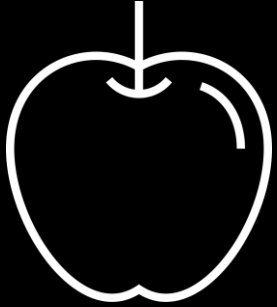
Data



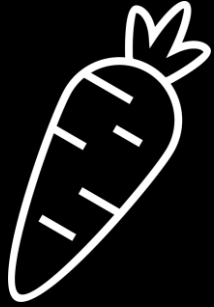
Drones



The “right” water in our food



70 L
40 L



150 L
45 L



1040 L
234 L




1222 L
500 L



5100 L
2040 L

A futuristic robot head is depicted, constructed from a dense arrangement of green plants, leaves, and various electronic components. The robot's face is a large, clear, spherical lens that glows with a warm, golden light. The background is a soft-focus green, suggesting a natural, agricultural setting. The overall aesthetic is a blend of nature and advanced technology.

**DOES AI PLAY A ROLE IN
AGRICULTURE?**



**WHAT CAN AI DO FOR
QATAR'S
AGRICULTURE?**





**WHAT ARE THE
IMPLEMENTATION
CHALLENGES IN THE
GCC?**



**WHAT ARE ACHIEVABLE
QUICK WINS?**

A blue humanoid robot stands in a lush green field, holding a tablet that displays a network diagram. The robot is positioned in the center-right of the frame, facing left. The background is a dense field of green plants, possibly a crop field, with a soft, hazy atmosphere. The text 'GLOBAL FOOD VALUE CHAINS (AND BEYOND)' is overlaid in the center, with 'VALUE' highlighted in green.

GLOBAL FOOD **VALUE** CHAINS (AND BEYOND)



Gabriele De Propriis
CEO of GROWA.AI

Thank you!

