

# From Labs to Launchpad: Overcoming Enterprise Adoption Hurdles

World  
Summit AI





# The long trek ahead...





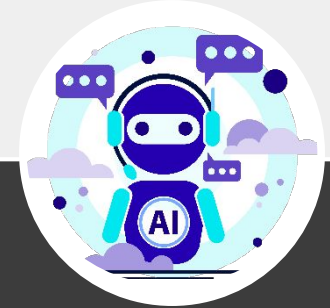
# The Gen AI (R)evolution

LLM

RAG

Reasoning

Agentic AI



Language >>> Context >>>

Predict the next best word or sentence.

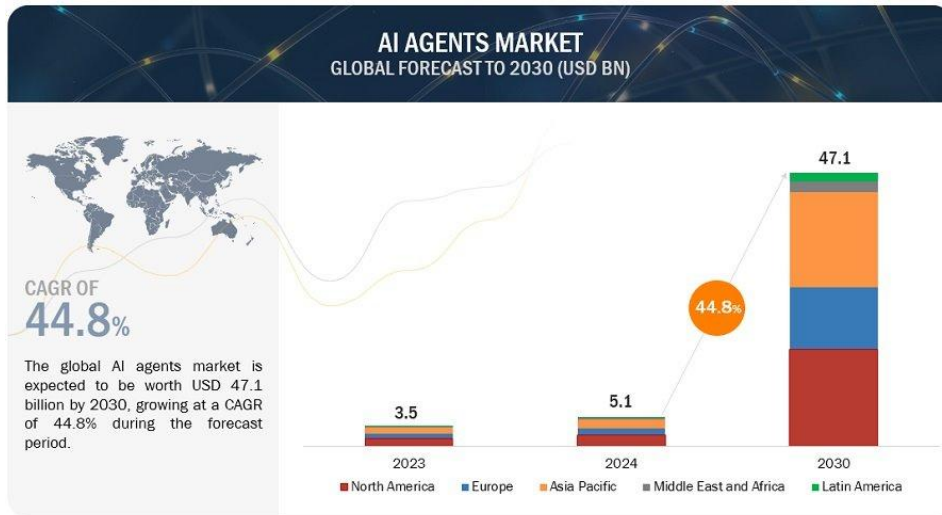
Search for the right data from targeted knowledge anchors.

Planning >>>

Decompose the prompt and assemble the best response / solution.

Action-taking

Autonomous agents with access to tools to trigger actions such as re-starting a service or generating a ticket.



**AI Agents to become the primary user interface and means of process automation.**

Source: Gartner

Source: <https://www.marketsandmarkets.com/Market-Reports/ai-agents-market-15761548.html>

## Top 3 challenges for enterprise use of Generative AI

**1** Variety and  
volume of data



**2** Capture of business  
know-how and integration  
into existing workflows

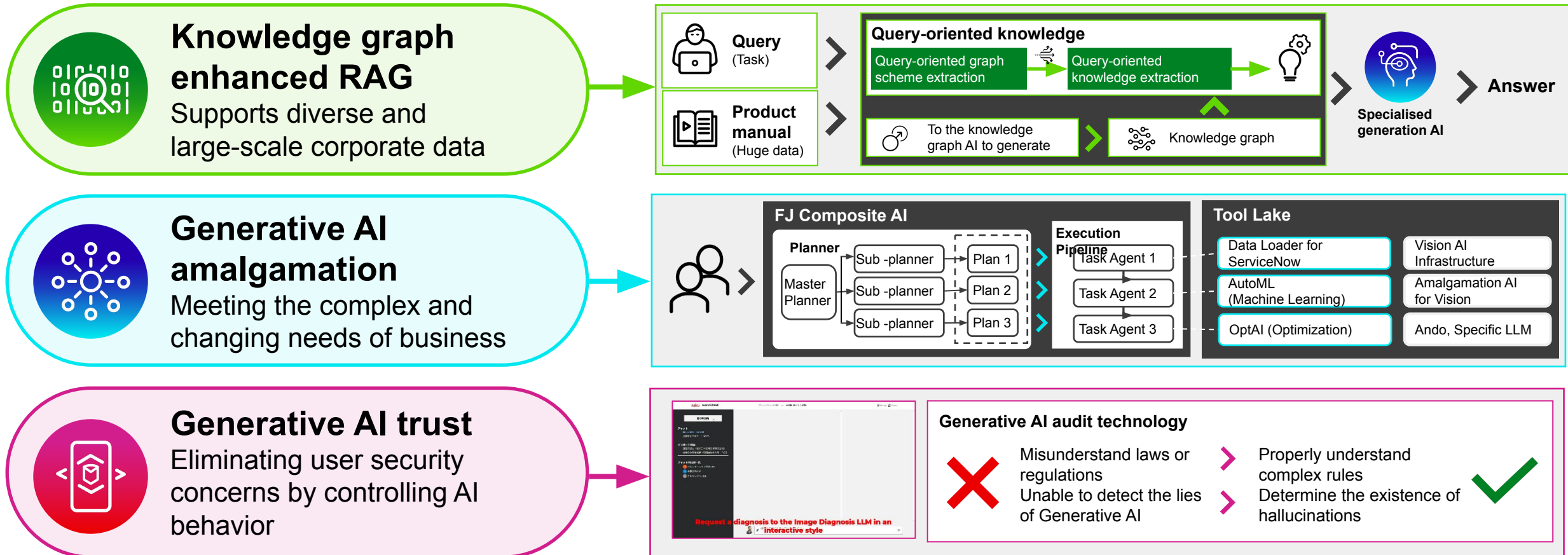


**3** Trust and compliance



# Enterprise Gen AI Framework

## Enabling enterprise adoption of GenAI



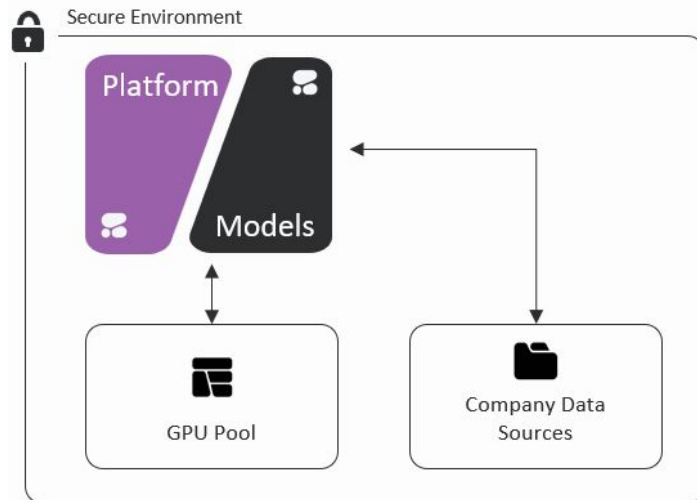
Fujitsu will focus on specialised LLM's for enterprise needs

# A security-first approach to AI

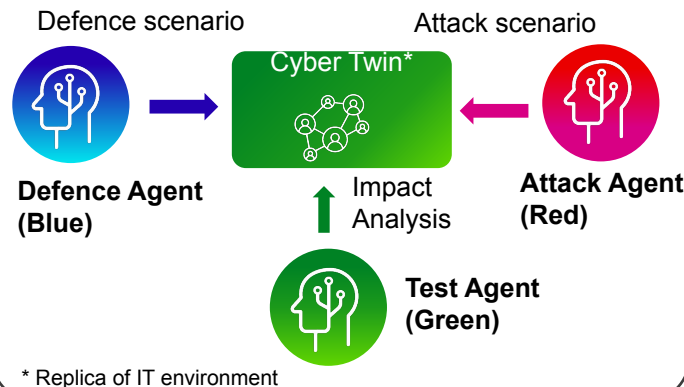
Flexible technologies that support customization and private deployment

Embedding security into the architecture of thru novel techniques

Responsible AI tools and best practices to measure adherence



## Strengthening security through collaboration between three agents



## Technologies and Tools

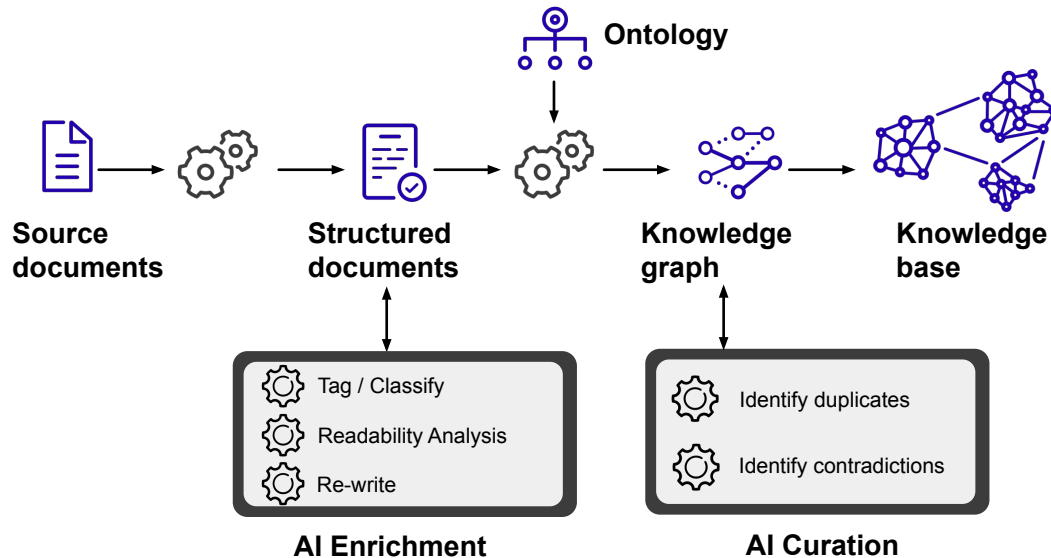
- AI ethics impact assessment
- Bias detection
- Data and model security
- Model maintenance
- GenAI hallucination detection

# Focus on outcomes and value



## Large Canadian Federal Department

Enhanced service delivery by standardizing and unifying knowledge bases and making knowledge AI-consumable



### Outcomes

Shorter responses  
**67%** of the time

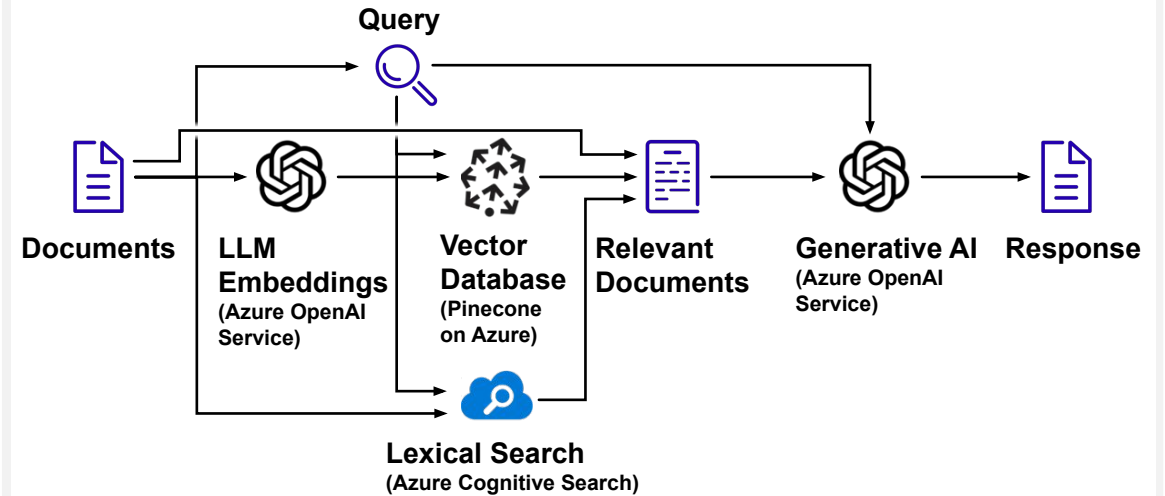
About **2x**  
more faithful  
answers

Significant reduction in  
manual effort leading to  
**lower costs**



## Canadian Hydroelectric Company

Search and summarization of knowledge across the organization to accelerate response to regulatory information requests



### Outcomes

Reduced time for response  
preparation  
by over **50%**

Significant  
**cost savings**

# Thank you

To learn more  
visit us at Booth  
#A34



<https://www.fujitsu.com/global/services/kozuchi/>