

USE CASE Mastering SaMD Development: Five Fundamental Principles for Success



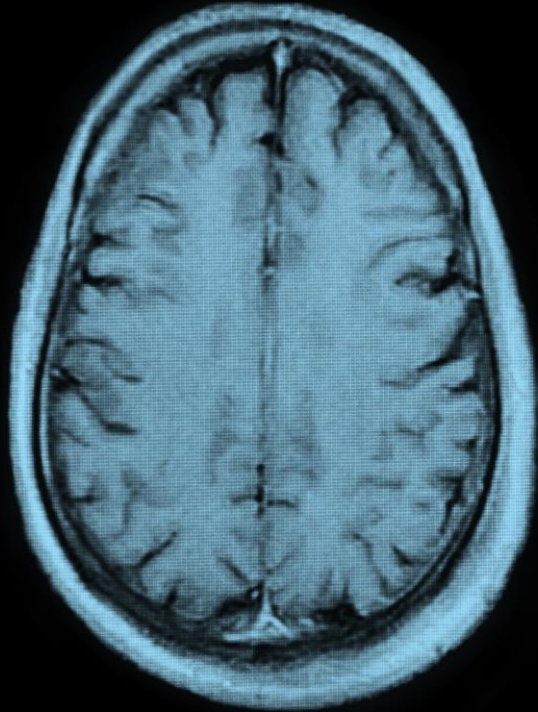
JAMES GRAVESTON

Principal Business Consultant
Zühlke

The logo consists of a solid purple square. Inside the square, the word "zühlke" is written in a white, lowercase, sans-serif font. Below it, the tagline "empowering ideas" is written in a smaller, white, lowercase, sans-serif font.

zühlke
empowering ideas

MRI Head Scan
Ex: 29942
Se: 8
Im: 4



Mastering SaMD Development

Five Fundamental Principles for Success

Dr. James Graveston
Principal MedTech Consultant

MedTech and SaMD have huge potential, but it isn't being realised.

Some big failures:



Greater use of health technology 'could save 20,000 lives a year'



The health benefits and business potential of digital therapeutics

January 27, 2023 | Article

By [Chirag Adatia](#), [Ralf Dreischmeier](#), [Samarth Shah](#), and [Kirtika Sharma](#)



Digital-native start-ups and healthcare incumbents can both play important roles in building and scaling digital therapeutics to improve the management of chronic health conditions.

TECH

Why digital health has been such a disappointment, and how to change that

We consult on and build MedTech



Prevented 1 million infections
44,000 hospitalisations
9,600 deaths in 12 months



What I'm not talking about....

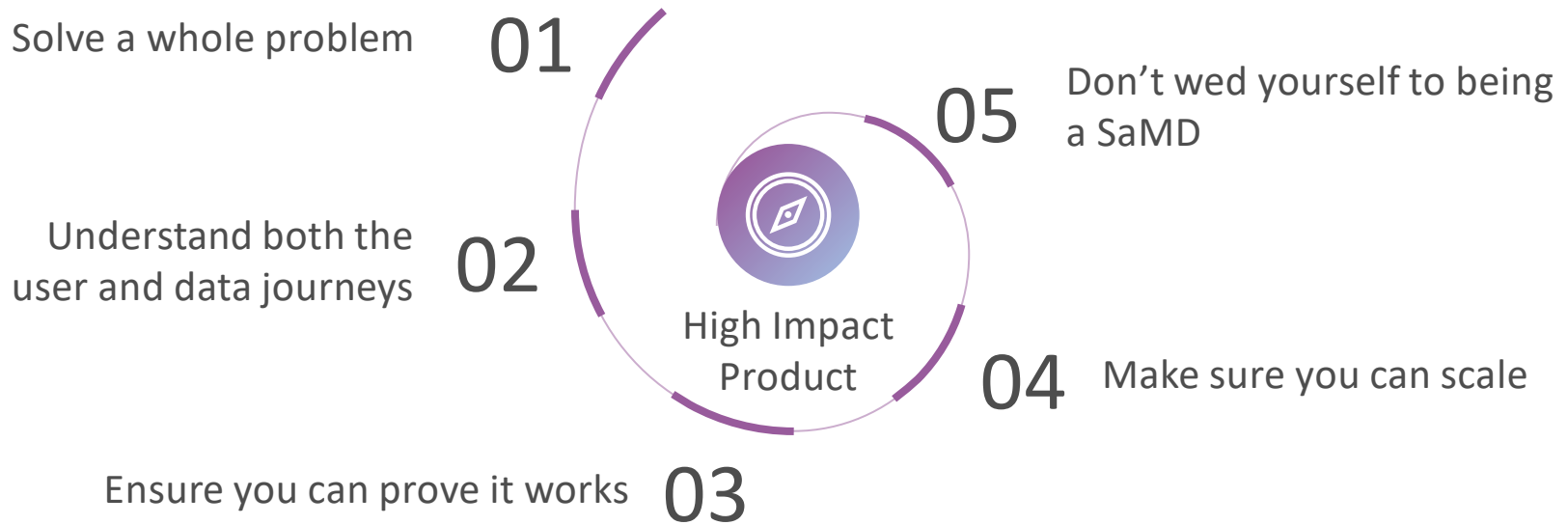
ISO13485

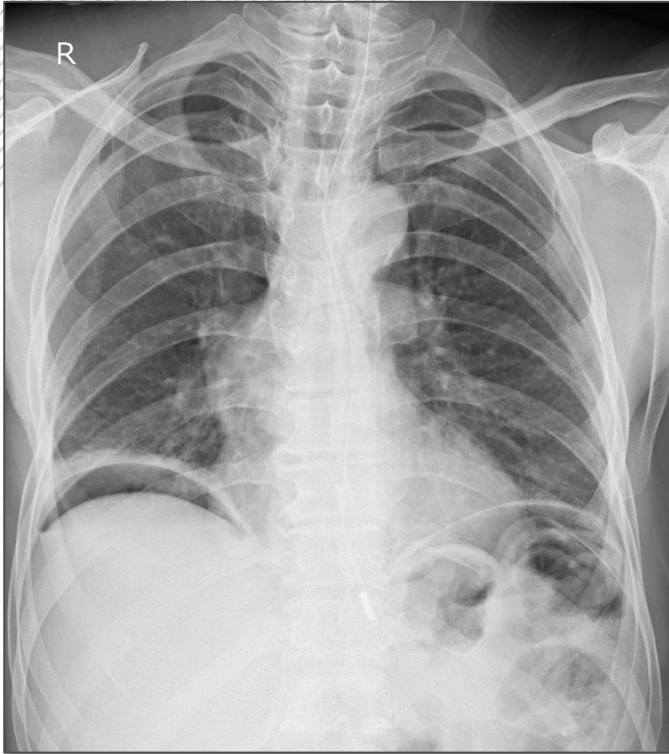
EN62304

Disclaimer:

The examples are from experience and heavily anonymised. If they describe your product, I'm sorry!

5 key points you must cover when developing or evaluating potential SaMD





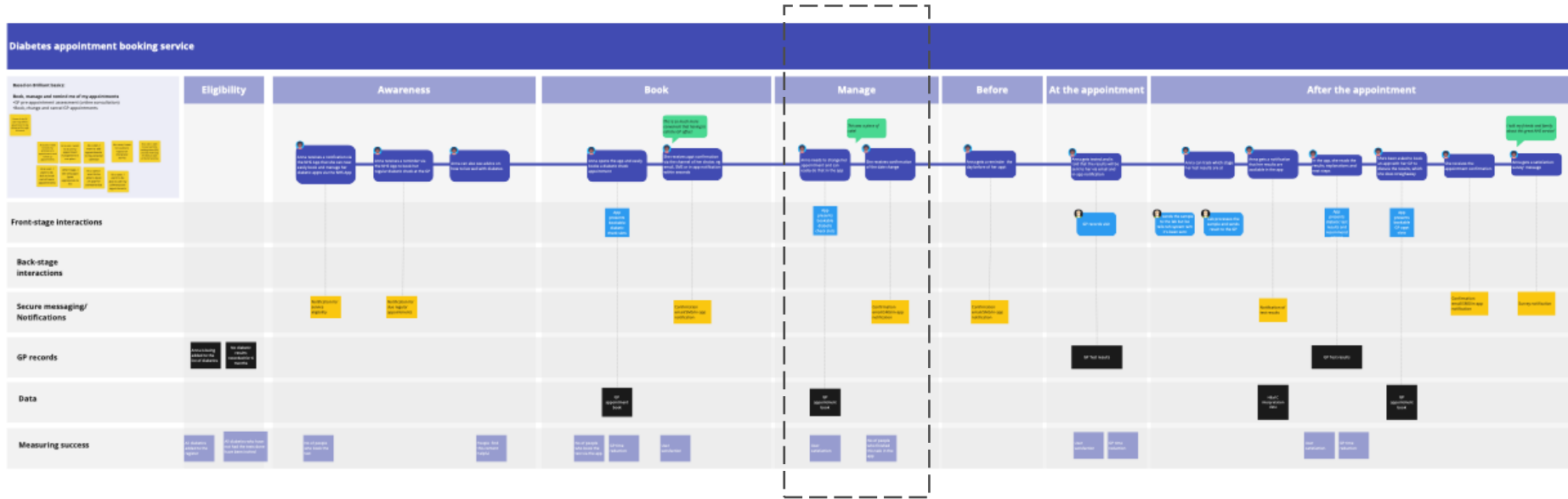
01

Solve whole problems

Why point solutions
don't often release time



02 Understand the whole context, not just your part

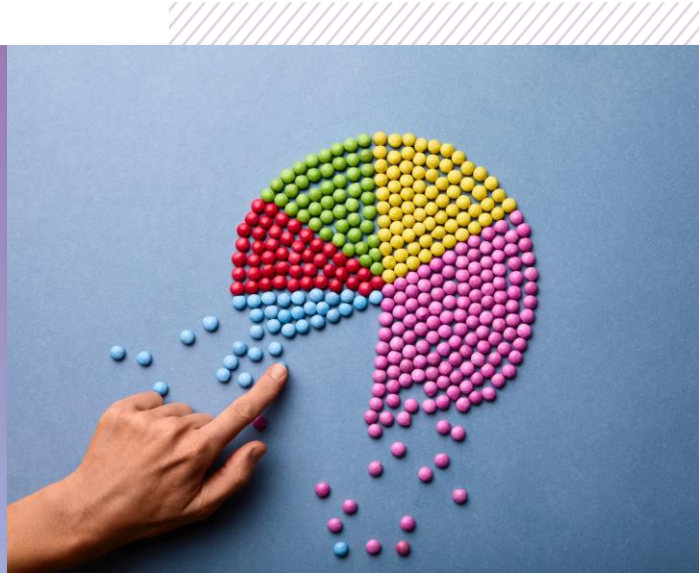


Don't just focus here

When you don't understand the user journey, you may find you don't provide value



- Can you get the data to make it run AND prove it works?
- Is there an API?
- Is the data you can get to prove it works representative?
- When is the data available, is it timely?



... and how data flows in and out of your solution?

03

Just because it works,
doesn't mean you can
prove it!



Software as a Medical Device (SAMD): Clinical Evaluation

Guidance for Industry and Food and Drug Administration Staff

Document issued on December 8, 2017.

The draft of this document was issued on October 14, 2016.

For questions about this document, contact the Office of the Center Director at 301-796-6900
or the Digital Health Program at digitalhealth@fda.hhs.gov.



U.S. Department of Health and Human Services
Food and Drug Administration
Center for Devices and Radiological Health

Validating black boxes can be very hard

TA

What is the likely diagnosis for a teenage boy with a blocked nose and recurrent nosebleeds



A blocked nose and recurrent nosebleeds in a teenage boy can be caused by several conditions. One possible diagnosis is nasal polyps, which are noncancerous growths on the lining of the nasal passages. Another possibility is allergic rhinitis, which is an allergic reaction to airborne allergens that causes inflammation in the nose.

TA

What is the likely diagnosis for an adolescent boy with unilateral nasal obstruction and recurrent epistaxis



Unilateral nasal obstruction and recurrent epistaxis (nosebleeds) in an adolescent boy can have several possible causes, but one possible diagnosis that should be considered is Juvenile Nasopharyngeal Angiofibroma (JNA).

Proving things
can take a long
time



04 Scaling is not a technology problem



Processes



IT Systems



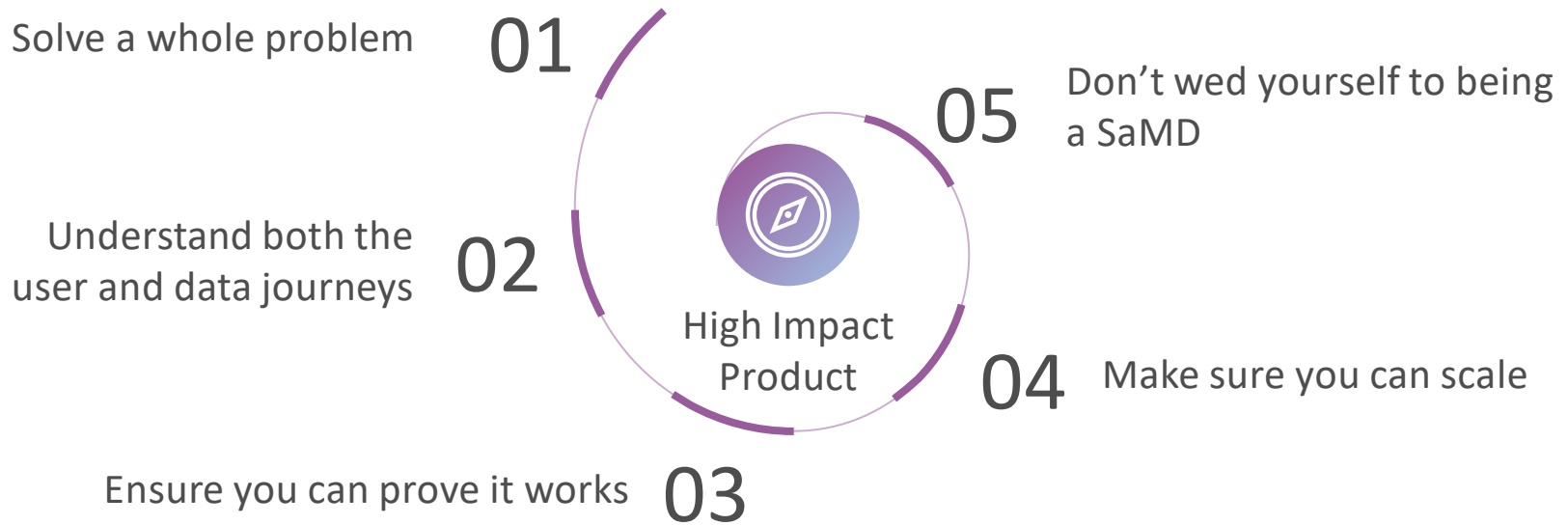
Data Quality
& Formats

05

Can you make a difference
without being a SaMD?



5 key points you must cover when developing or evaluating potential SaMD



» Build the right thing..
...then build it right

Dr. James Graveston
Principal MedTech Consultant



INTELLIGENT HEALTH UK 2023

Breaking down the barriers
between tech and healthcare