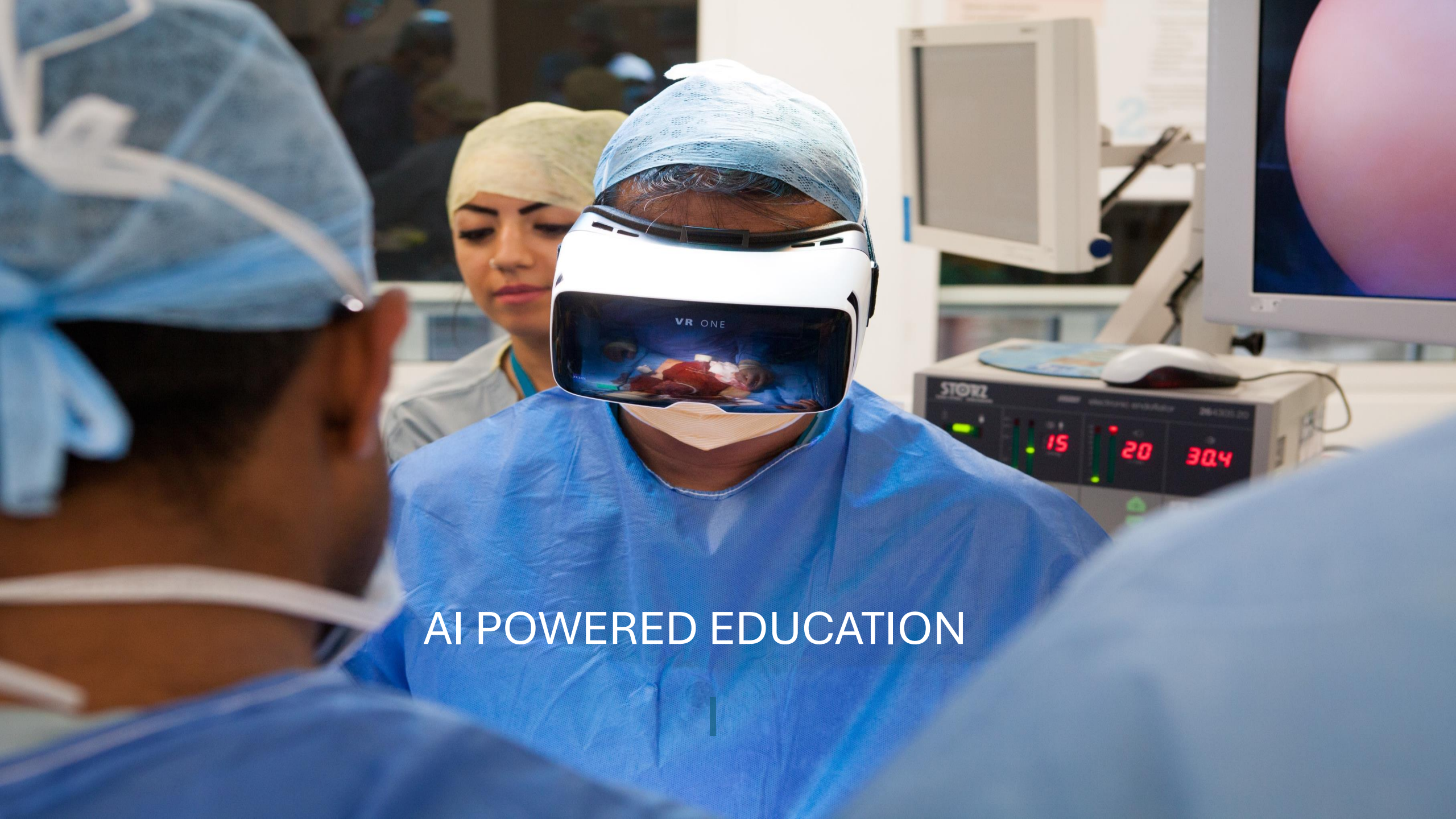




**HE HAS BEEN
HAILED**





AI POWERED EDUCATION



"Write." The Pen said:

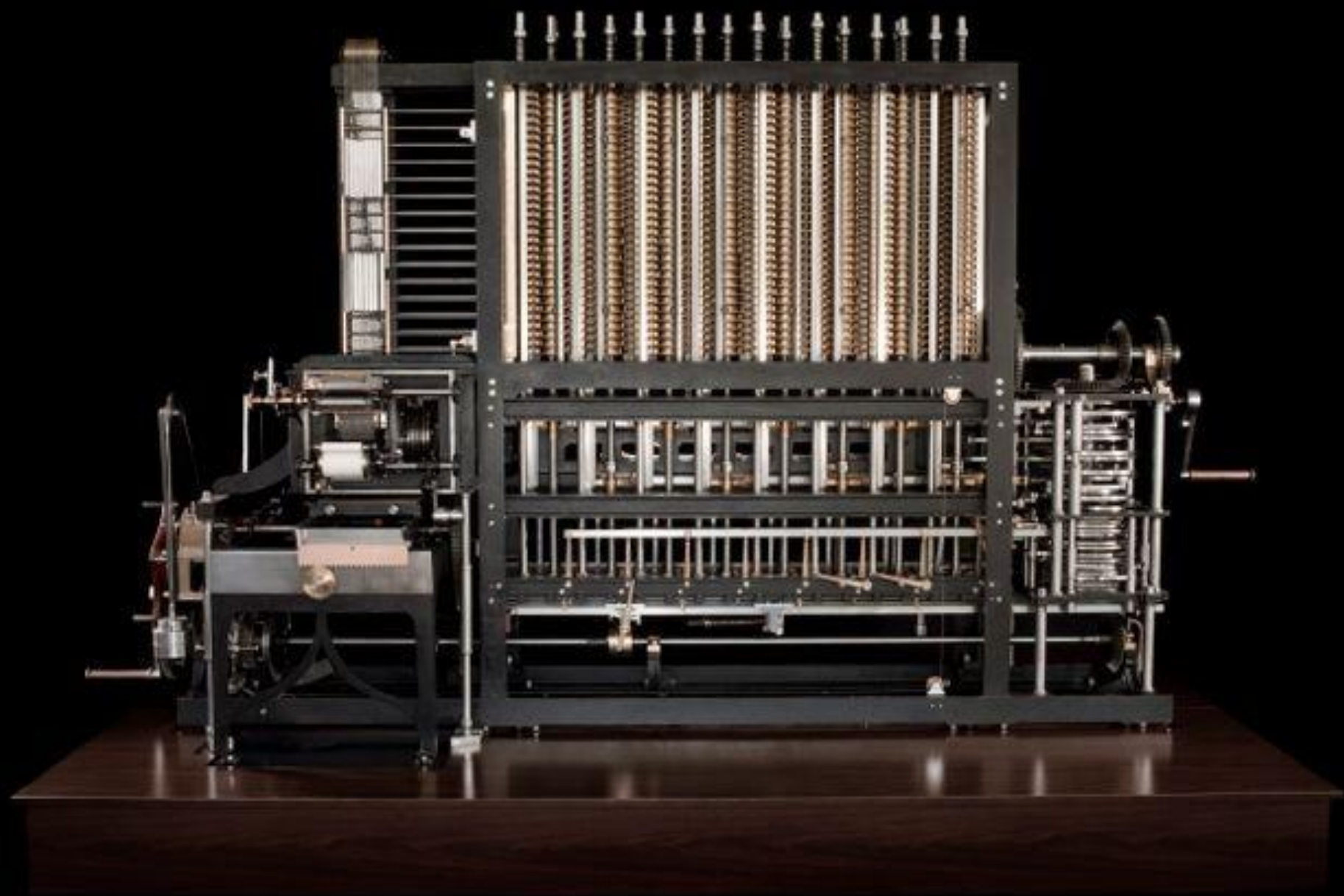
"O my Lord, what shall I write"

*He said: "Write the decree and
whatever will throughout eternity."*

Surah Al Qalam

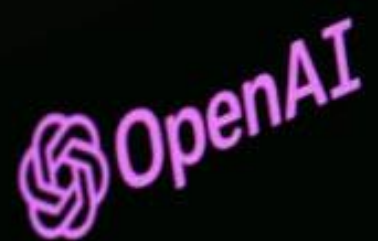






EDUCATION 4.0

TRANSFORMING THE FUTURE OF EDUCATION



ChatGPT: Optimizing Language Models for Dialogue

trained a model called ChatGPT which interacts in a
way. The dialogue format makes it possible for
followup questions, admit its mistakes,
and reject inappropriate
model to InstructGPT, which is
prompt and provide a

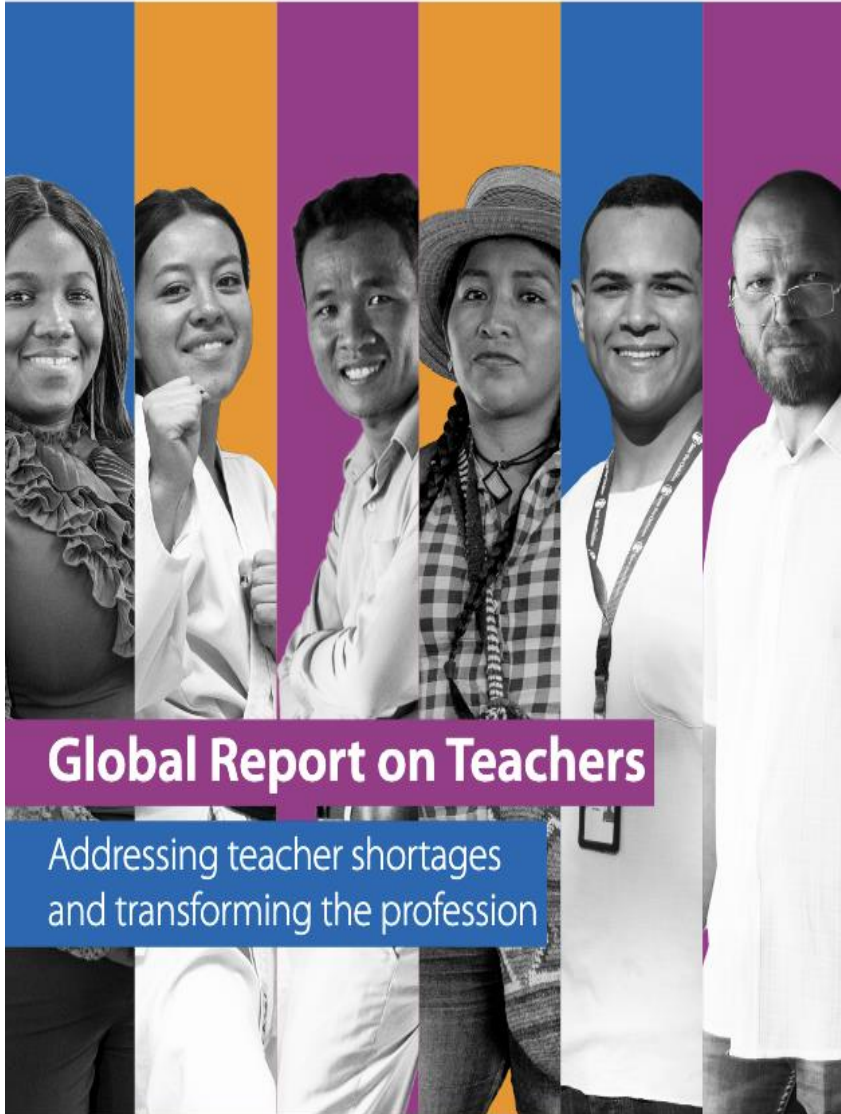


Global strategy on human resources for health: Workforce 2030

Table A1.3: Estimates of health worker needs-based shortages (in millions)^a in countries below the SDG index threshold by region, 2013 and 2030

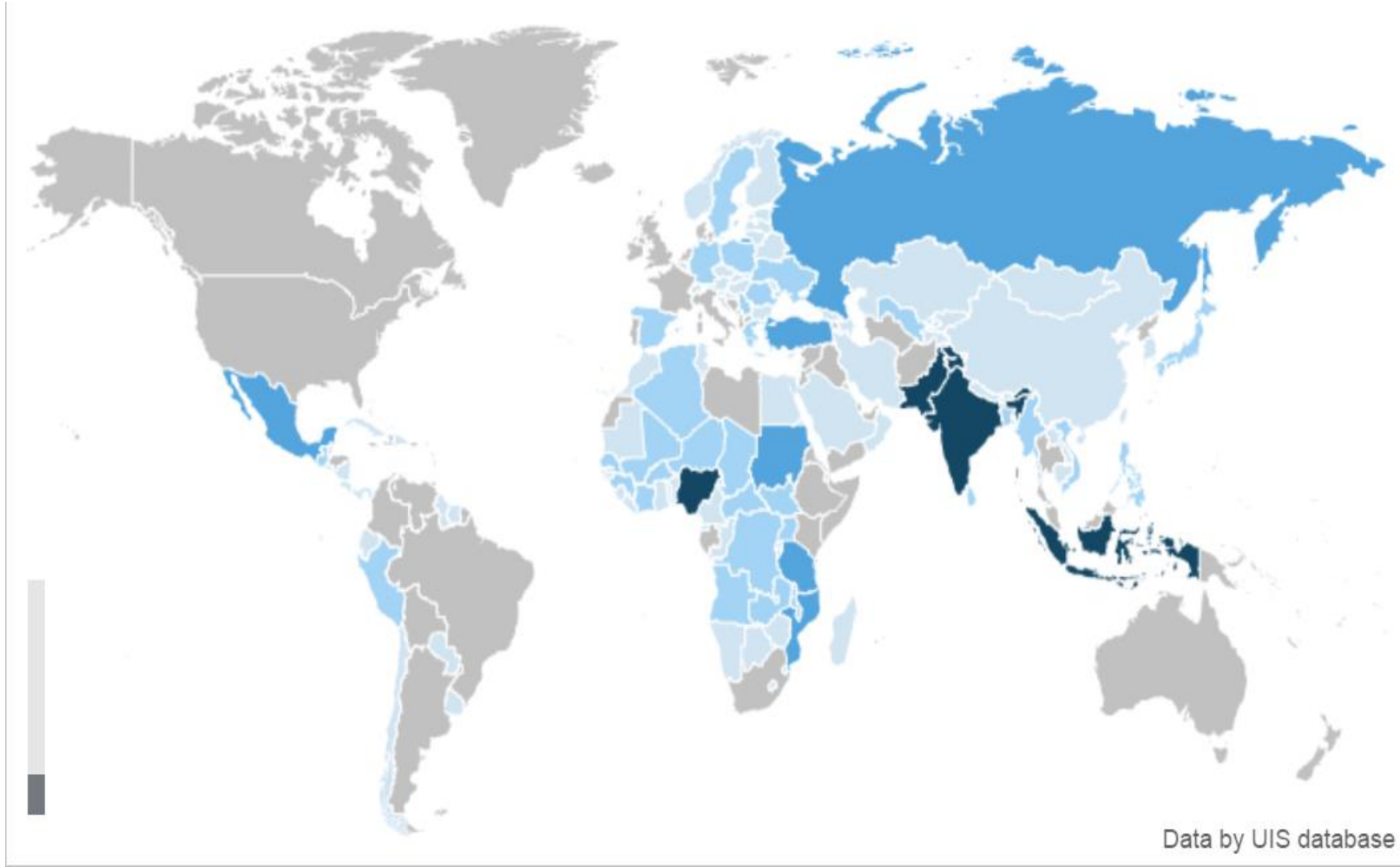
Region	2013				2030				% Change
	Physicians	Nurses/ midwives	Other cadres	Total	Physicians	Nurses/ midwives	Other cadres	Total	
Africa	0.9	1.8	1.5	4.2	1.1	2.8	2.2	6.1	45%
Americas	0.0	0.5	0.2	0.8	0.1	0.5	0.1	0.6	-17%
Eastern Mediterranean	0.2	0.9	0.6	1.7	0.2	1.2	0.3	1.7	-1%
Europe	0.0	0.1	0.0	0.1	0.0	0.0	0.0	0.1	-33%
South-East Asia	1.3	3.2	2.5	6.9	1.0	1.9	1.9	4.7	-32%
Western Pacific	0.1	2.6	1.1	3.7	0.0	1.2	0.1	1.4	-64%
Grand total	2.6	9.0	5.9	17.4	2.3	7.6	4.6	14.5	-17%

^a Since all values are rounded to the nearest 100,000, totals may not precisely add up.



Global Report on Teachers

Addressing teacher shortages
and transforming the profession



Data by UIS database





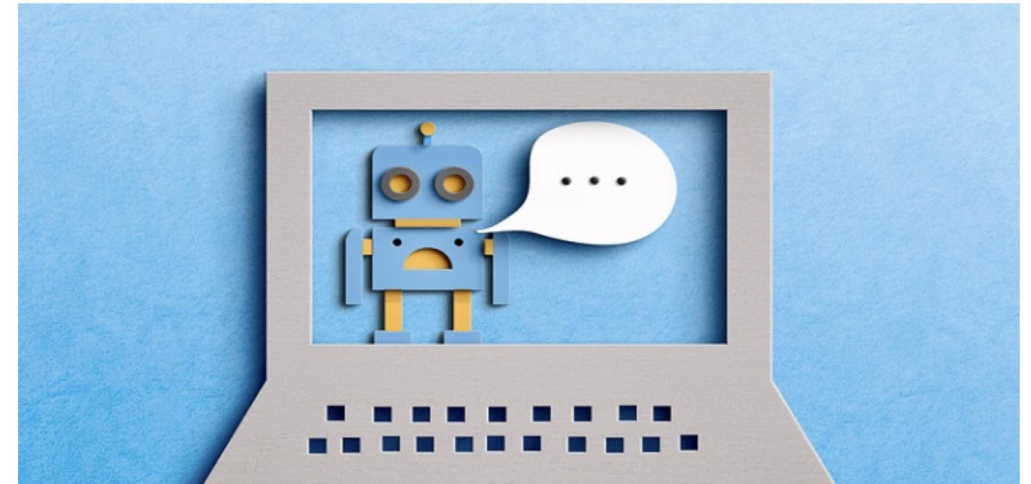


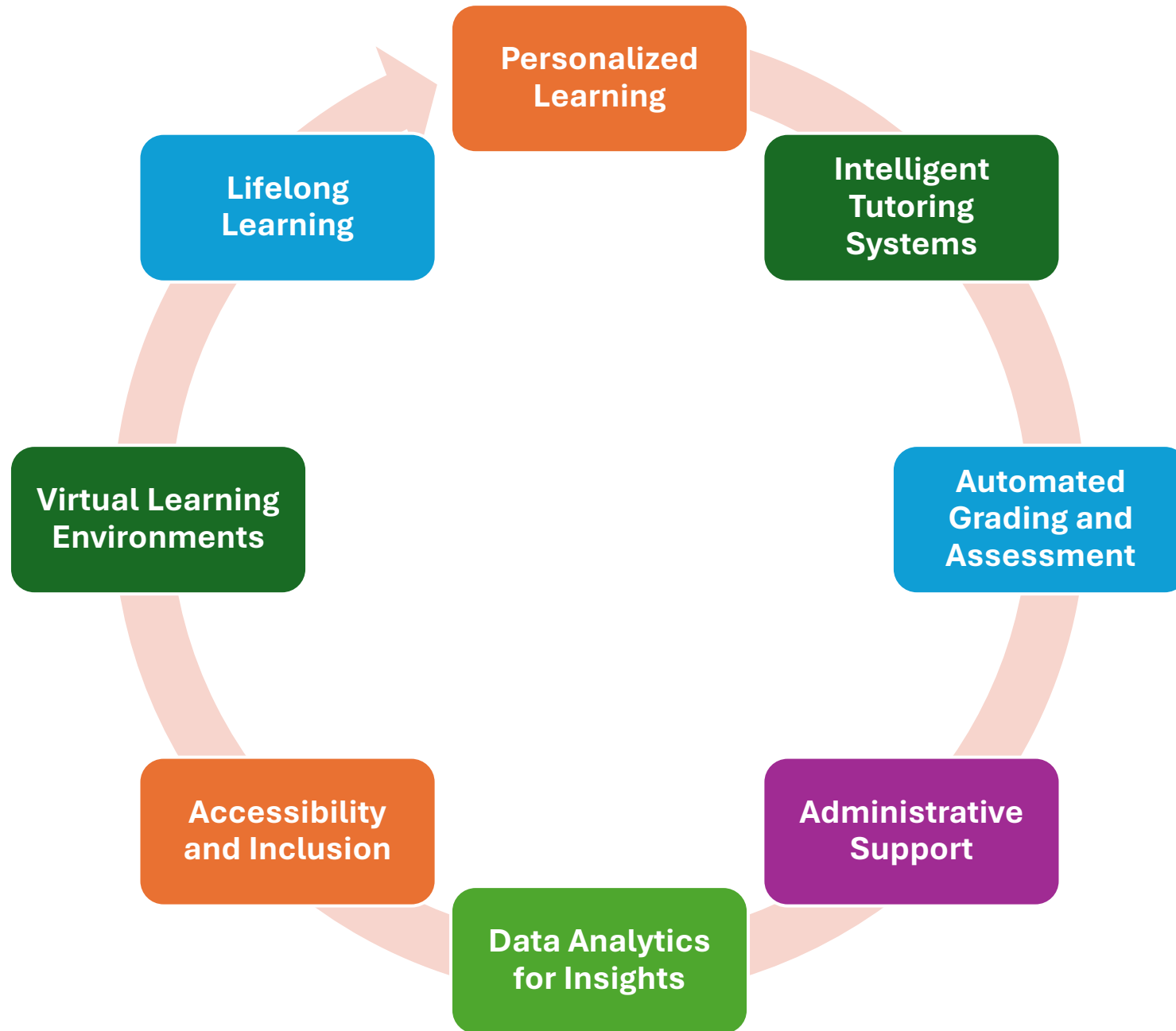
ChatGPT gives 'more empathetic' responses to patient queries than doctors, new study suggests



ChatGPT Passes US Medical Licensing Exam Without Clinician Input

ChatGPT achieved 60 percent accuracy on the US Medical Licensing Exam, indicating its potential in advancing artificial intelligence-assisted medical education.







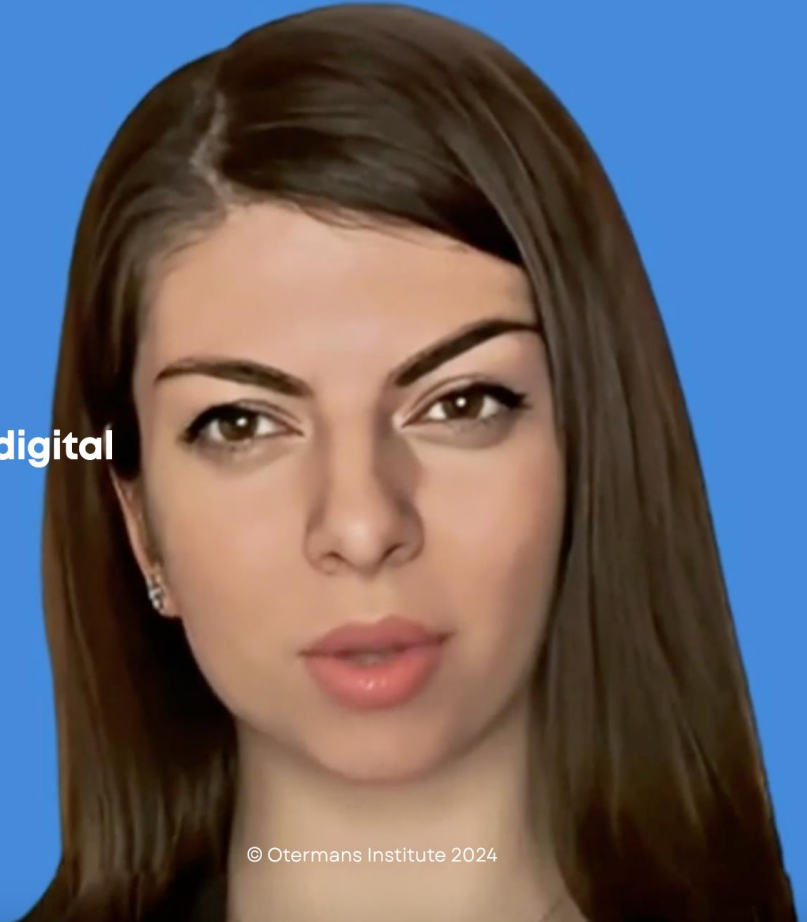
by Otermans Institute®



OIAI

Meet the world's first AI digital
human teacher

[Learn More](#)



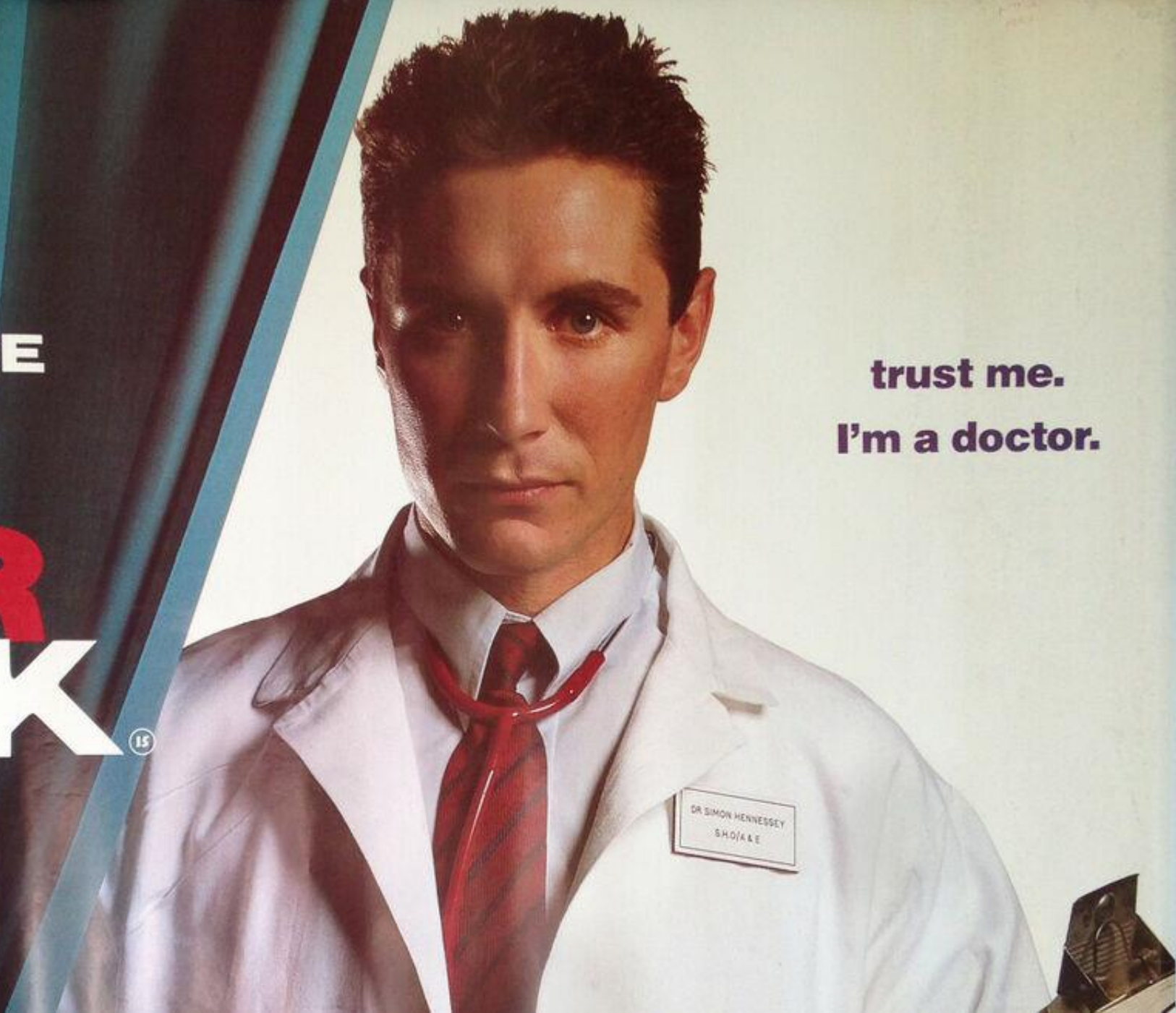
© Otermans Institute 2024

**PAUL
MCGANN**

**AMANDA
DONOHOE**

**PAPER
MASK** [®]

**trust me.
I'm a doctor.**



TO BAN OR EMBRACE? SCHOOLS SPLIT ON CHATGPT

43% college students admit to using ChatGPT.



21% of educators also using it to plan lessons and quizzes.



Only 2 international universities have explicitly banned ChatGPT



OpenAI can identify only 26% of AI-generated text



Teacher regularly uses a generative AI content detection tool to determine whether students' work is AI-generated



38%

August 2023

59% of licensed special education teachers
19% teachers not licensed in special education

68%▲

December 2023

76%▲ of licensed special education teachers
62%▲ teachers not licensed in special education

School provides a tool or recommends AI content detection tools to teachers

43%

August 2023

78%▲

December 2023



INTRODUCING MEDICAL REALITIES

AI POWERED XR TRAINING PLATFORM



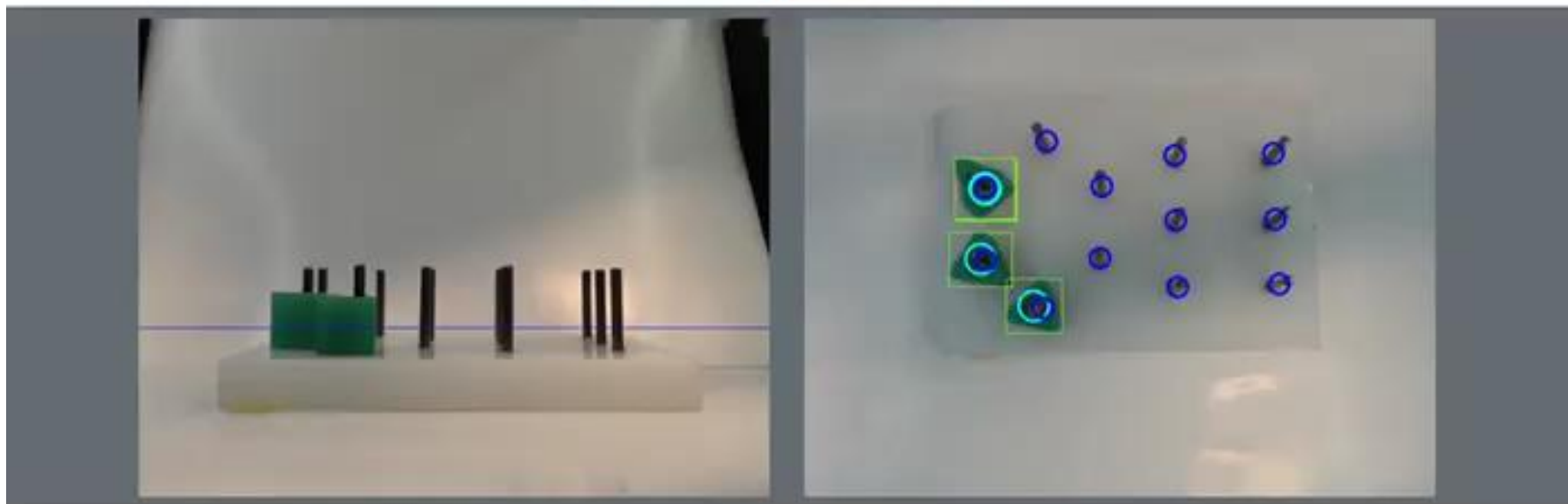
Machine Learning Training System

Time: 0 sec

Errors: 0

START EXECUTION

STOP EXECUTION



ML Training System © Innovative Training Technologies SRL - INTECH - CFAdvanced

Innovative Training Technologies SRL - INTECH [Visit the homepage.](#)

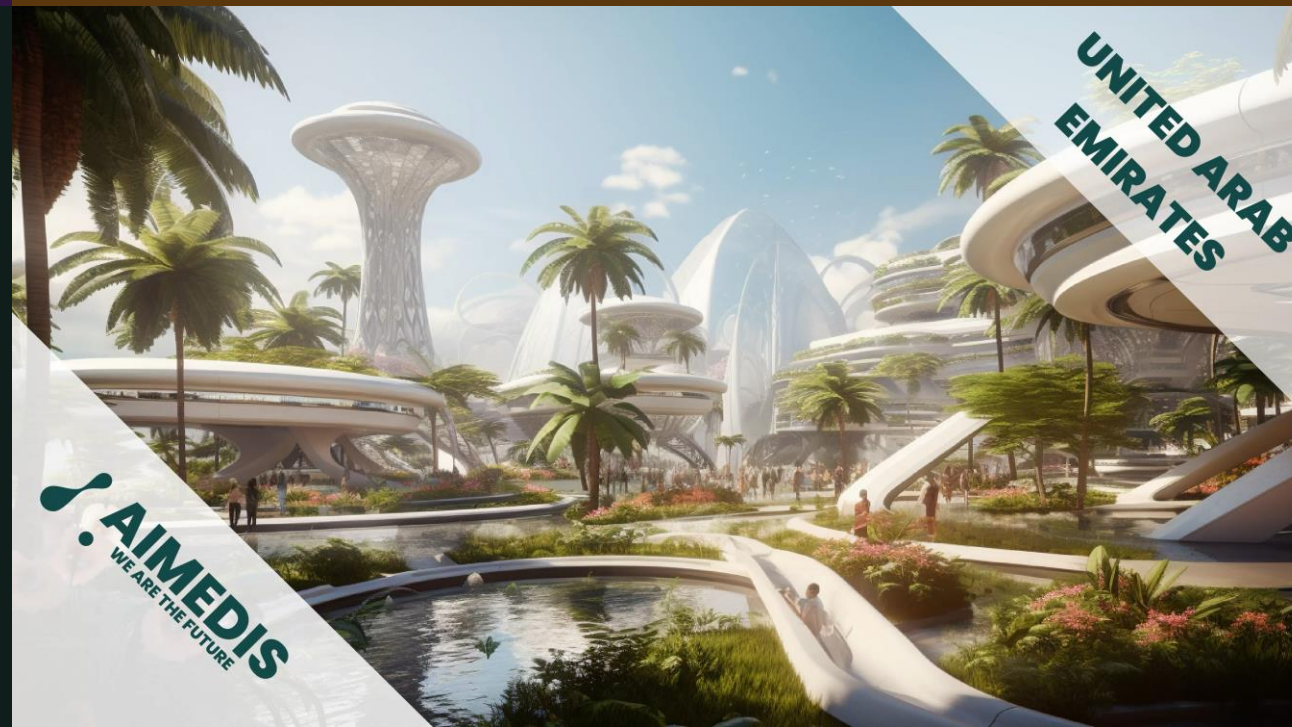
Track fixed pegs



 **AIMEDIS**
WE ARE THE FUTURE

 **AIMEDIS**
WE ARE THE FUTURE

 **AIMEDIS**
WE ARE THE FUTURE



Professor S. Ahmed Auditorium

Marjorie F. Solt

The School of Architecture

To reach the that few can reach
We have to teach in the way that few can teach

To reach the that few can reach

We have to teach in the way that WE ALL can teach