



Responsible use of **AI** in an **Integrated Care**  
setting to drive **Value Base Health**

*Basel, September 11th 2024*

# WHO ARE WE?

**STRENGTH.** Ribera Group is the 2<sup>nd</sup> largest healthcare group in Spain.



# WHERE WE ARE

## INTERNATIONAL FOOTPRINT



# WHAT WE DO.

**DIVERSIFICATION. More than a hospital group.**



# VALUE BASED HEALTH

## First accountable care organization in Europe

**Public Private Partnership.**  
Partnerships with Government.  
A Company that provides a portfolio of services to government sponsored healthcare programs.

PPP MODEL

CAPITATED PAYMENT

### Capitated Payment.

It is HEALTH that is FINANCED. Having a CAPITATED SINGLE BUDGET makes us fully accountable for the global healthcare outcomes of a defined population. Our most important goal is to achieve the best health conditions for the citizens. The capitated payment is a critical enabler for ACO creation.

### QUINTUPLE AIM

Improve healthcare outcomes  
Increase patients satisfaction  
Efficiency  
Addressing clinician burnout  
Equity

**Healthcare integration.**  
We specialize in transforming fragmented systems into citizen centered integrated healthcare systems.

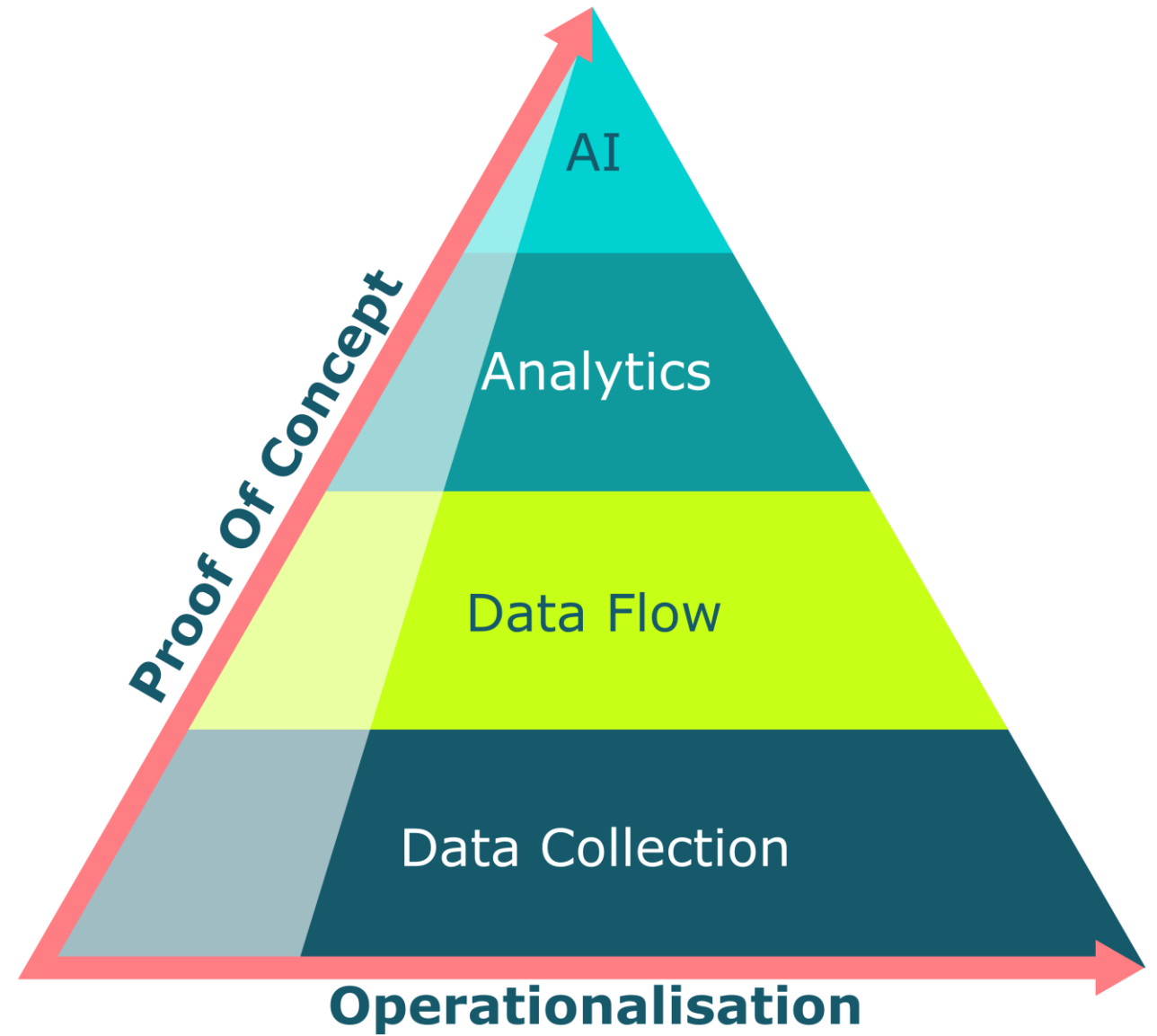
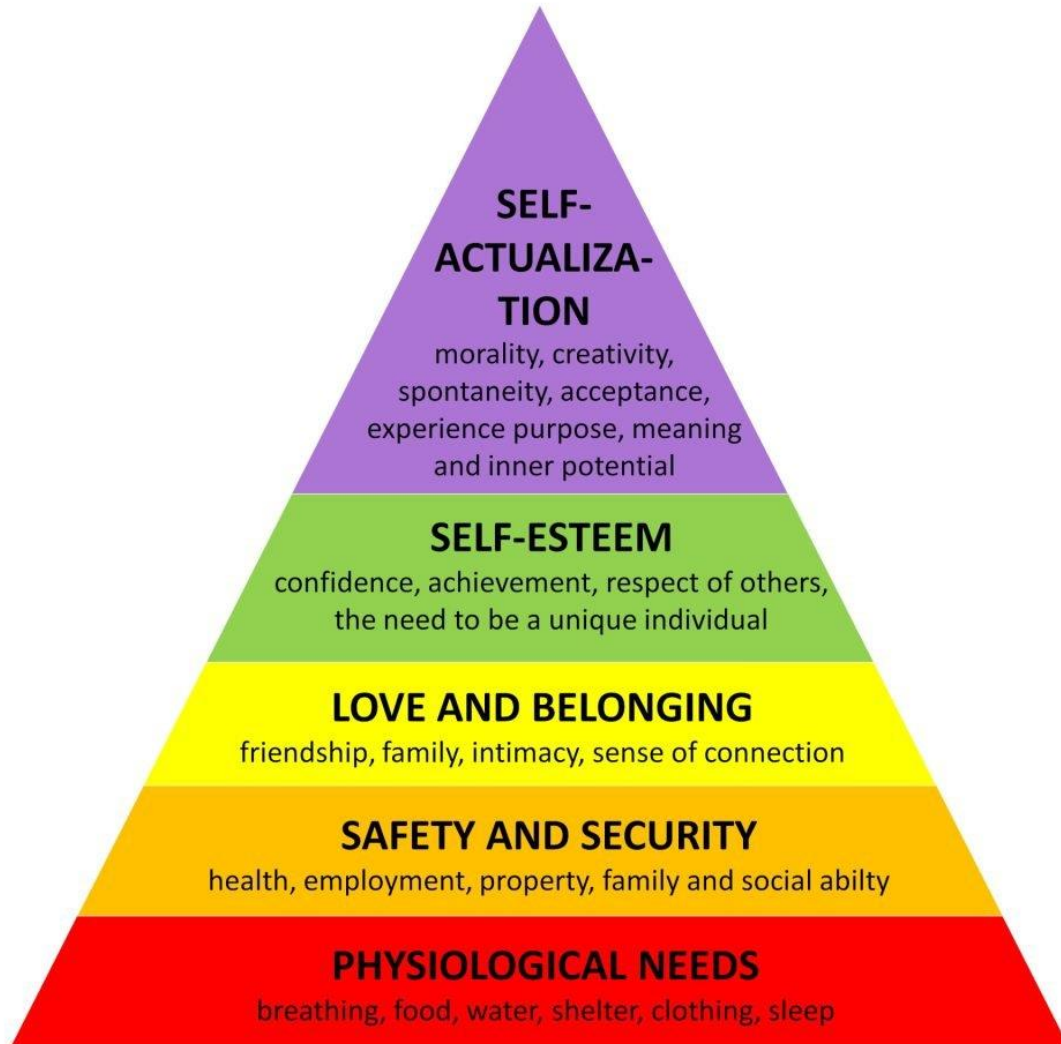
HEALTHCARE INTEGRATION

NETWORKING

### Synergies and scalability.

Technology allows for wider collaboration and coordination, resulting in higher efficiency and better outcomes. We are working not only with hospital and the primary care centers, but also with mental health providers, social services, the community (city councils, schools, home care etc...). We also believe that within the system it is not necessary for all the hospitals to provide all services, as long as there is coordination between them.





## siso

Shit In, Shit Out: If you're putting shit data into an experiment, you're going to get shit data out.

Your results are bubkes, what did you expect? SISO!



## Fairness

AI systems should treat all stakeholders equitably and should not reinforce undesirable stereotypes and biases.

## Transparency

AI systems and their output should be understandable to relevant stakeholders.

## Accountability

The people who design and deploy AI systems must be accountable for how their systems operate.

## Reliability

AI systems should be designed to perform safely even in the worstcase scenario.

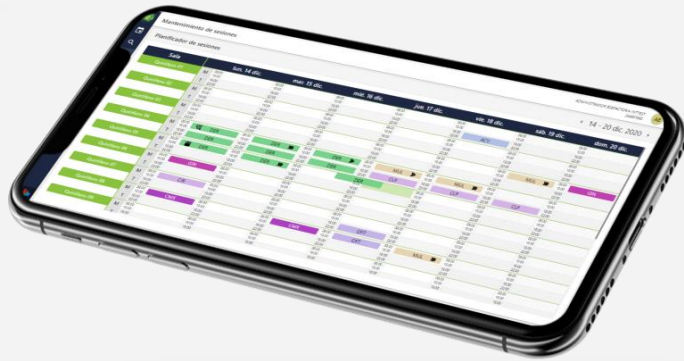
## Privacy & Security

AI systems should protect data from misuse and ensure privacy rights.

## Inclusion

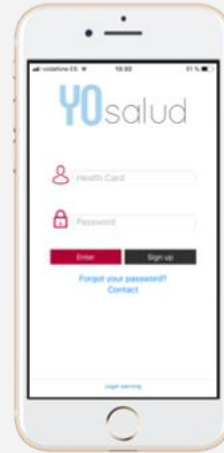
AI systems should empower everyone, regardless of ability, and engage people by providing channels for feedback.





## Electronical Medical Record **Cynara Care / Eniah Care**

Advanced technology to aid in clinical decision making and maximize process efficiency. Allows interoperability and data analysis. It is modular, valid for both hospitals and primary care centers, covering private hospital processes as well.



## Citizen Health Portal **Cynara Citizen**

A digital telemedicine/telehealth solution that meets the needs of both patients and professionals. It is integrated with the electronic medical record and is also a PHM platform with patient process follow-up and healthcare plans.



## BI Platform enabling decision-making **Cynara Intelligence**

BI solution used as centralized data platform, collecting and consolidating data from multiple sources and hospitals with a unified viewing of the data and the governance, with advanced data analytics capabilities.



Members

[Remove All Members](#)

My Members (15)

- ✘ adrián, adrián
- ✘ antonio, antonio
- ✘ daniel, daniel
- ✘ eva, eva
- ✘ felipe, felipe
- ✘ fran, fran
- ✘ iker, iker
- ✘ jaime, jaime
- ✘ jose, jose
- ✘ luis, luis
- ✘ manuel, manuel
- ✘ maria, maria
- ✘ raquel, raquel
- ✘ sara, sara
- ✘ sofia, sofia

Tasks

Scheduler

Faxes

## Welcome Francisco Ballesta

Last Login: 09/19/2016 08:14 AM

Today's Tasks and Task Reminders

Include Overdue Tasks [Refresh](#)

10 << < Prev 1 2 Next > 11+ results

	Actions	Activity	Member Name
i	<a href="#">Close All</a>	<a href="#">Work on Interventio</a>	manuel, manuel
i	<a href="#">Close All</a>	<a href="#">Work on Interventio</a>	manuel, manuel
i	<a href="#">Close All</a>	<a href="#">Work on Interventio</a>	manuel, manuel

Message Board

[Refresh](#)

Total Number of Open Messages: 0

Actions	Date	!	Message	Created By	Archived

Calendar

<<
<
TODAY
>
>>
  
 Monday,

08 AM  
30

Case Load Summary

[Refresh](#)

Total Number of Open Cases: 28

Member Name	Case Name	
<a href="#">sofia, sofia</a>	<a href="#">General</a>	0
<a href="#">sofia, sofia</a>	<a href="#">General</a>	0

jaime, jaime

**jaime, jaime**

Member #: 2016072900000013  
07/12/1977 (39 years)  
Mujer  
No Allergies  
Group #:  
PCP:  
BHP: Ribera Salud > Cobertura Universal > Comunidad Valenciana > SIP > Vinalopo > ZONA BASICA PLA-VINALOPO > CAP PLA-VINALOPO

Members

Tasks

Scheduler

Faxes

Ownership

Member Information | [Clinical](#) | [Care Management](#) | [Documentation](#) | [Tasks](#) | [Scheduler](#)

jaime, jaime

Alerts

No User Alert

No System Alert

Demographics

Member: jaime, jaime  
Member ID: 2016072900000013  
DOB: 07/12/1977  
Marital Status:  
**No Addresses**  
**No Phone Numbers** **No Emails**

Diagnosis

No Diagnoses

Key Metrics

Allergies

No Allergies

Programs

07/29/2016 COPD (System) Enrolled





PERFUSIÓN

MCR-p

Ruido de base

Perfusión pura

Captación tisular

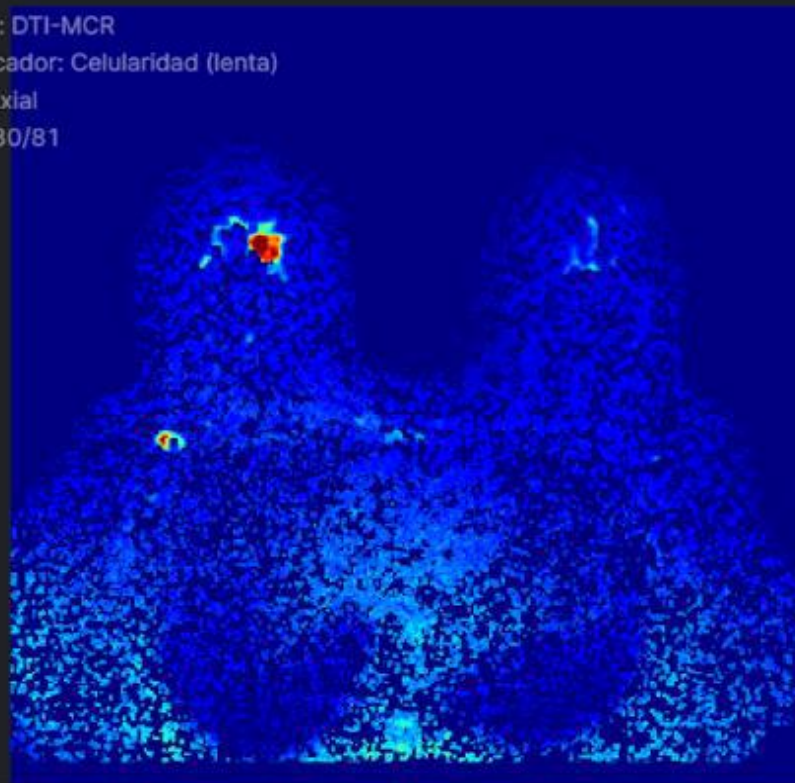
Baja perfusión

Biopsia virtual

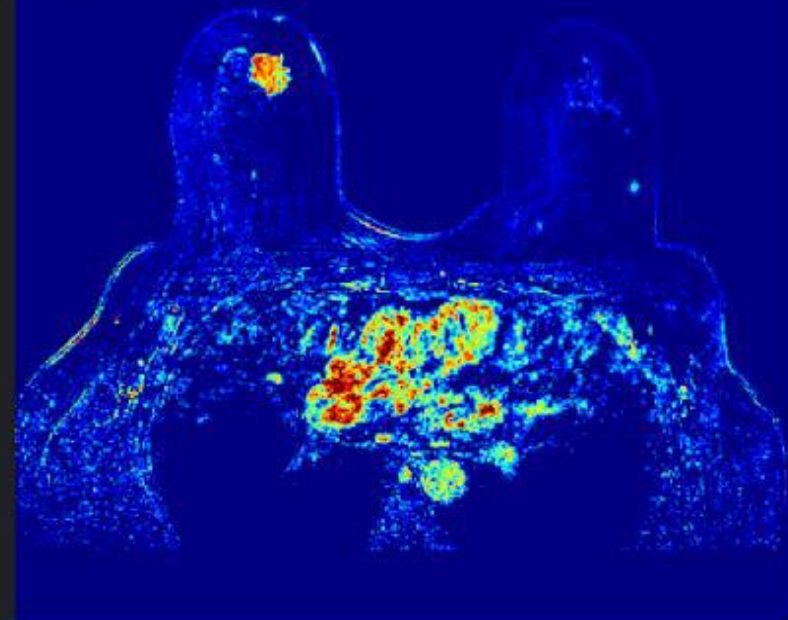
Curvas

DTI

Modelo: DTI-MCR  
Biomarcador: Celularidad (lenta)  
Vista: Axial  
Corte: 30/81



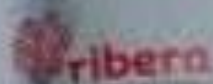
Modelo: MCR-p  
Biomarcador: Perfusión pura  
Vista: Axial  
Corte: 45/122





## María Luisa Quiles

ENFERMERA GESTORA DE PACIENTES PALIATIVOS  
HOSPITAL UNIVERSITARIO DEL VINALOPO



Lola is the virtual assistant.



**THANK YOU**