

START-UPS SHOWCASE



Dr. Janis Reinelt
Chief Medical Officer
AICURA medical



Accelerate clinical research with data x AI

Intelligent Health | 2023



Less than 3% of medical data generated today is used

Medical data **has grown 15x** in the last 7 years

Seizing this opportunity is very difficult

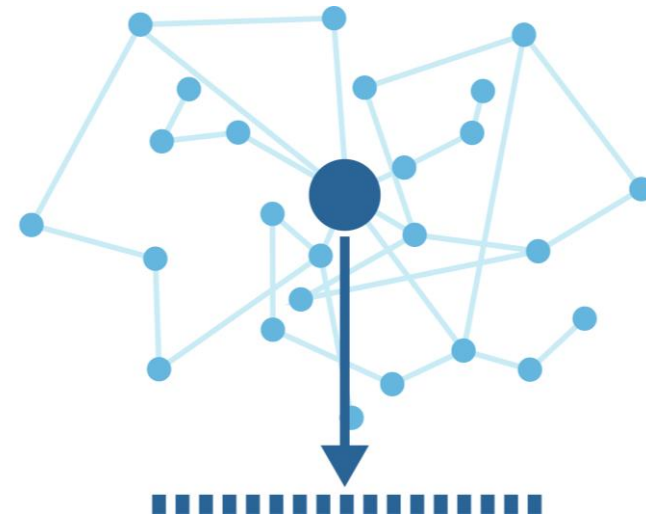
Medical data is ...



siloes, complex, strictly
regulated



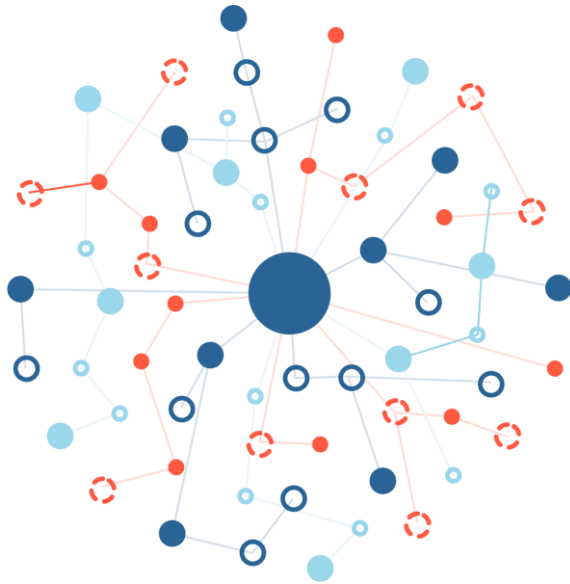
Analytical methods need to ...



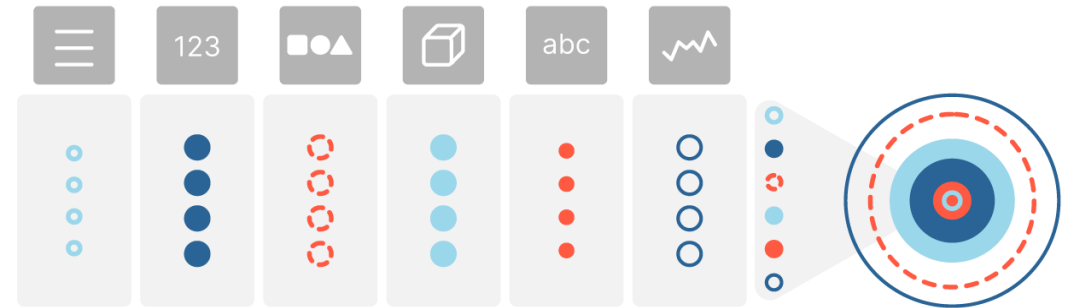
handle multimodal, incomplete data,
and be 'explainable'



Our **graph-based data model** and **modular AI engine**, leverage the information contained in ALL existing medical data

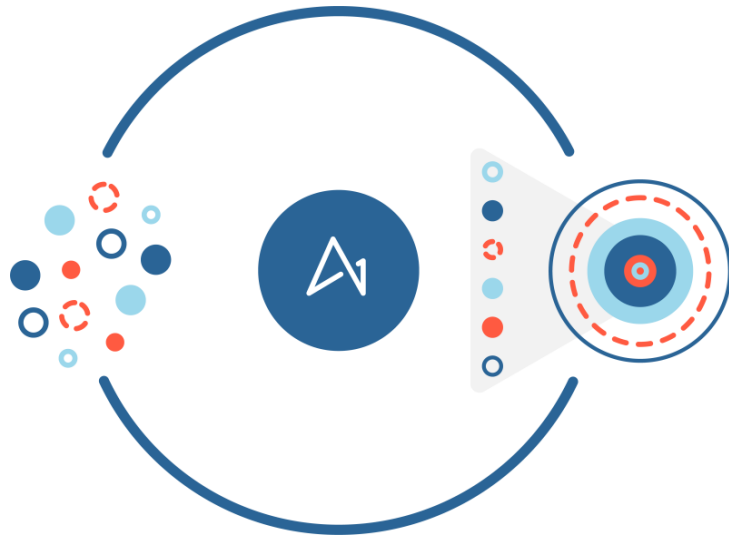


Data Model



AI Engine

AICURA Platform: Data model x AI engine **de-risk clinical trials**



AICURA Platform

Biomarker Enhancement

Eligibility Assessment

Endpoint Selection

Randomization

Case study: How we leverage the AICURA Platform to optimize patient identification in Neuro Degenerative Disorders

Challenge

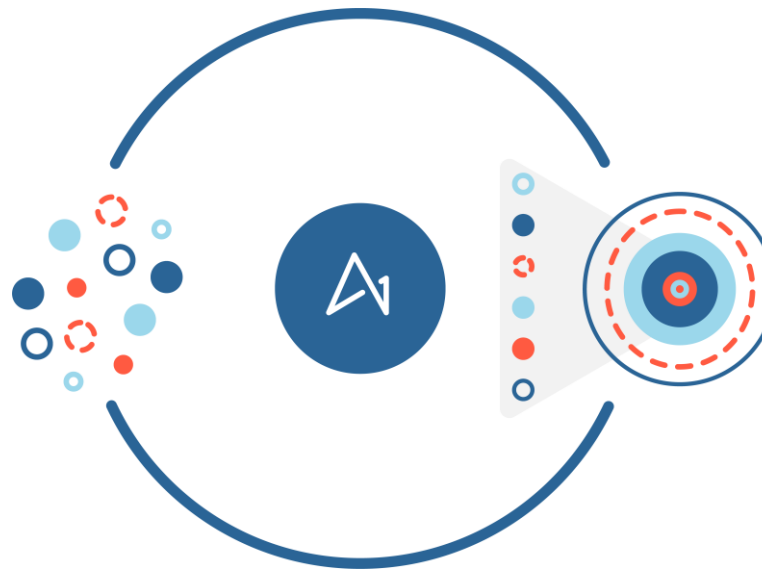


NDD costs over \$1.3T → expected to rise to \$2.8T by 2030

The diagnostic workflow is complex

Over 20 types of dementia that are hard to diagnose

AICURA's Deep-learning-based Dementia Classifier







We integrated, harmonized, and qualified data from 20+ open data sets into our data model



Open datasets

 4RTNI
 ADNI
 CRYO
 PAD

 A4
 AIBL
 HCP
 PPMI

 ABCDS
 BIOFIND
 ICBM

 ABIDE
 BRIN
 NIFD

>30,000



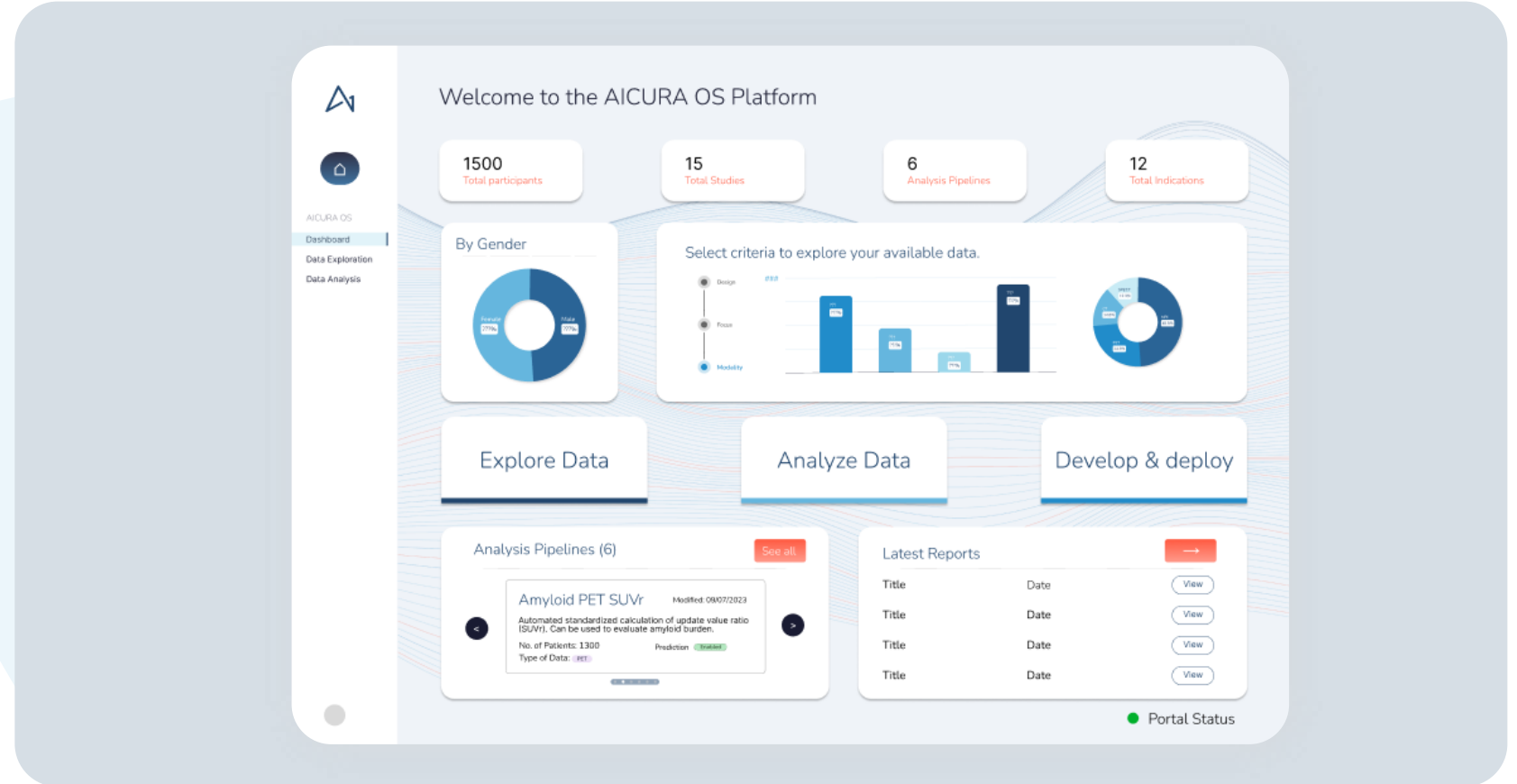
Conditions

Alzheimer's
Parkinson's
FTD
LBD...

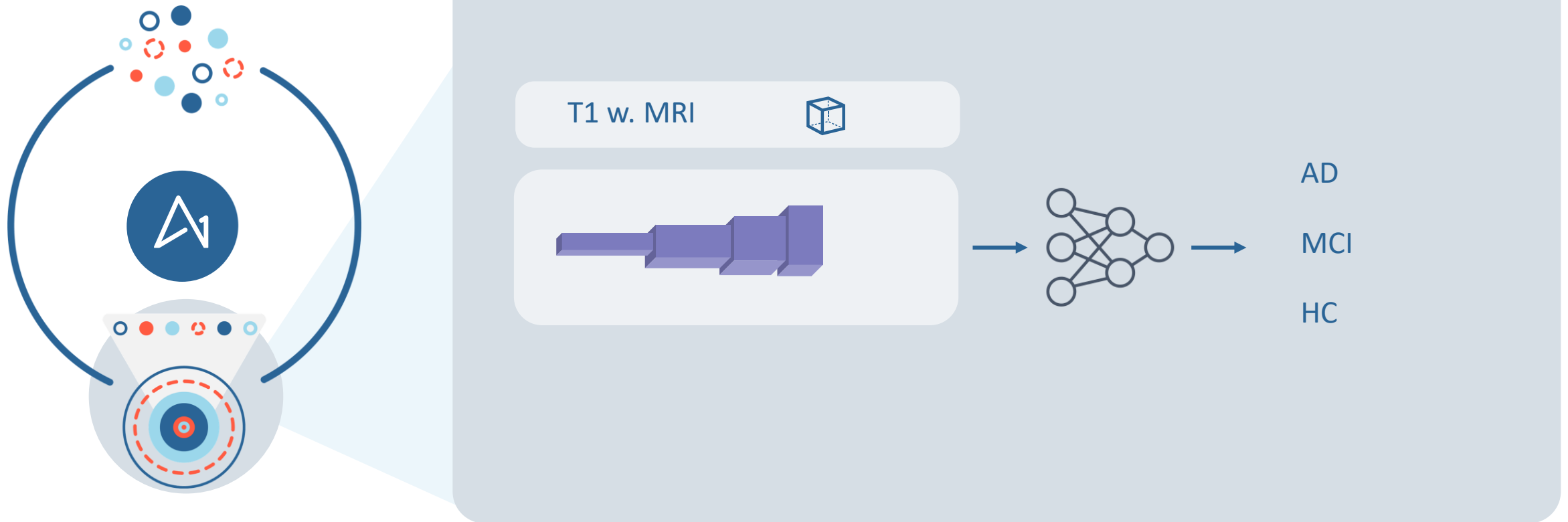
Data modalities



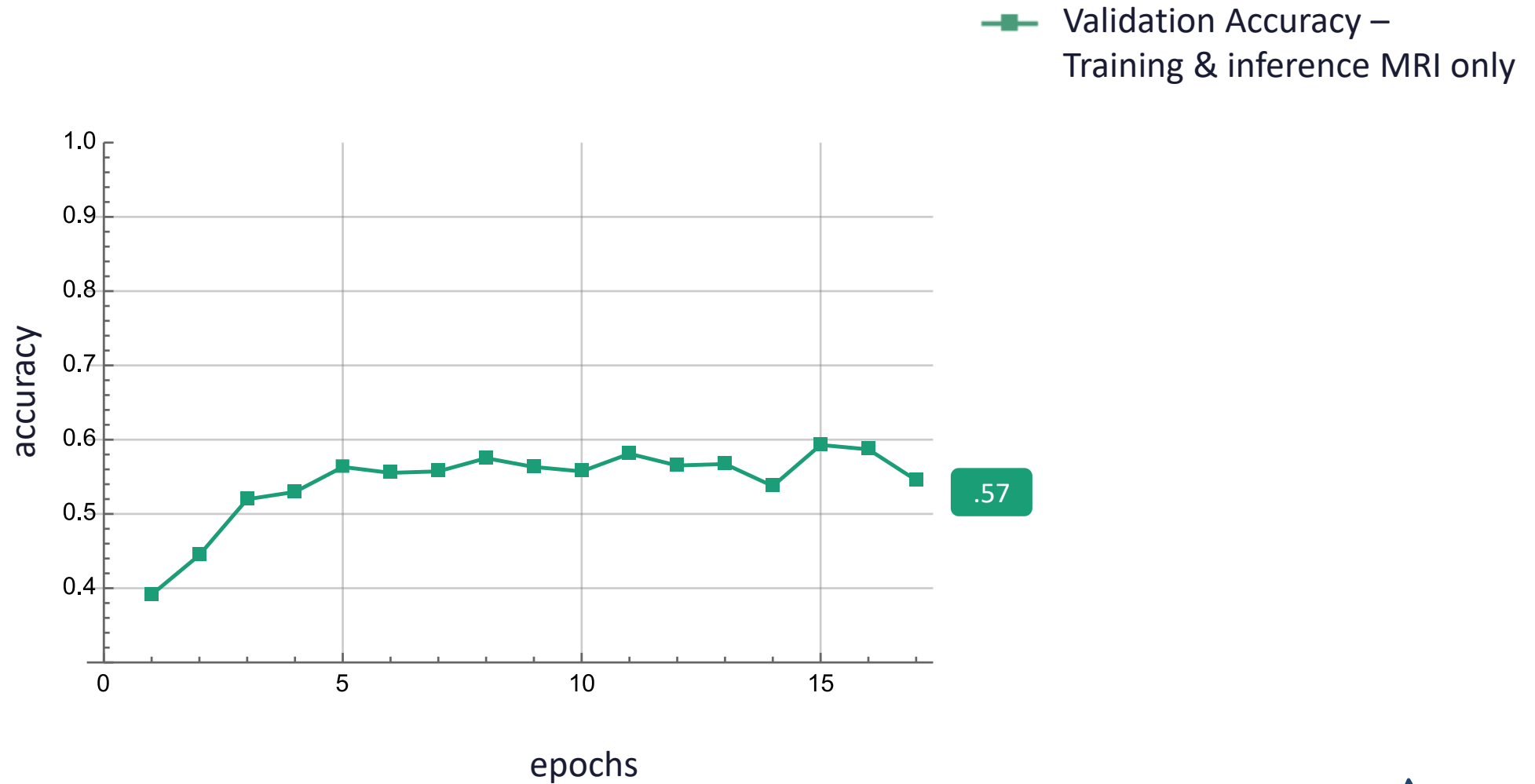
Now this data can **easily be queried**, and **insights can be unlocked**



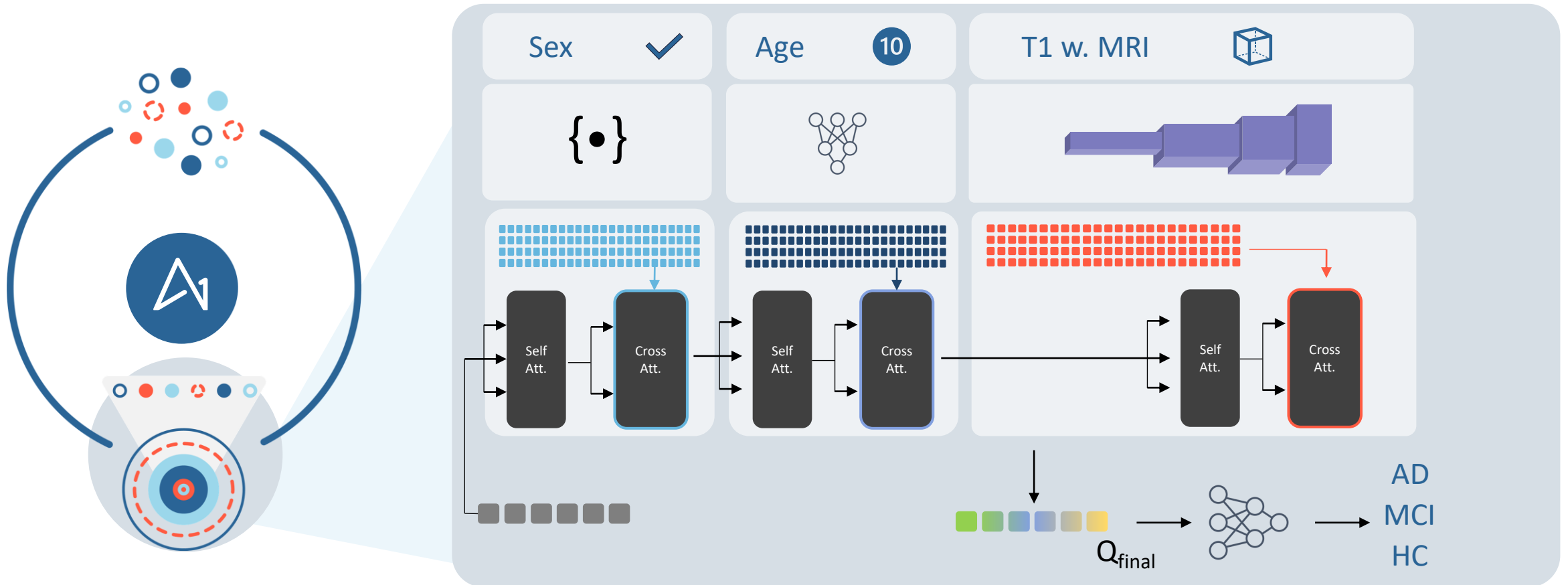
First trained a conventional **CNN** to predict 3 classes



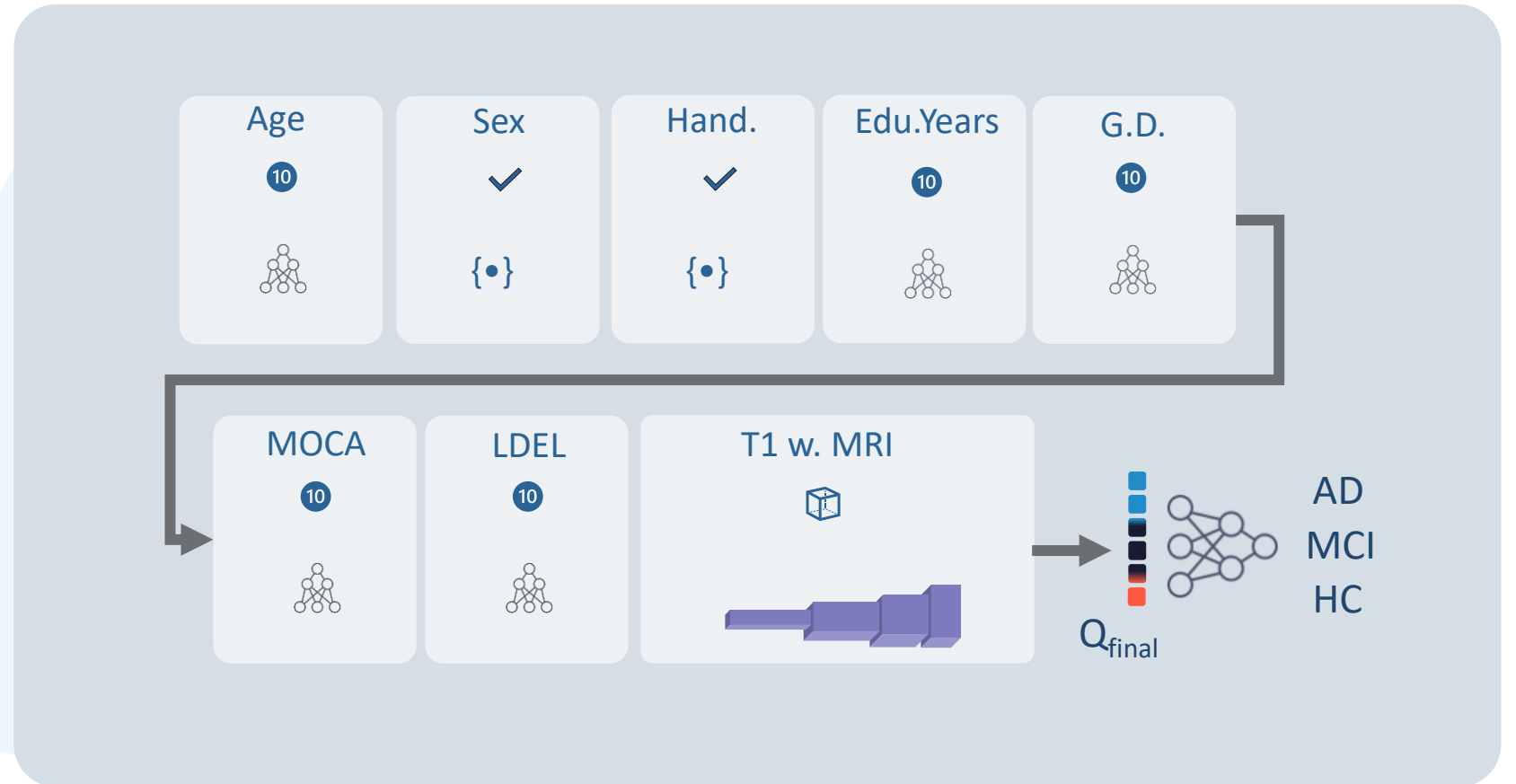
This showed **average performance**



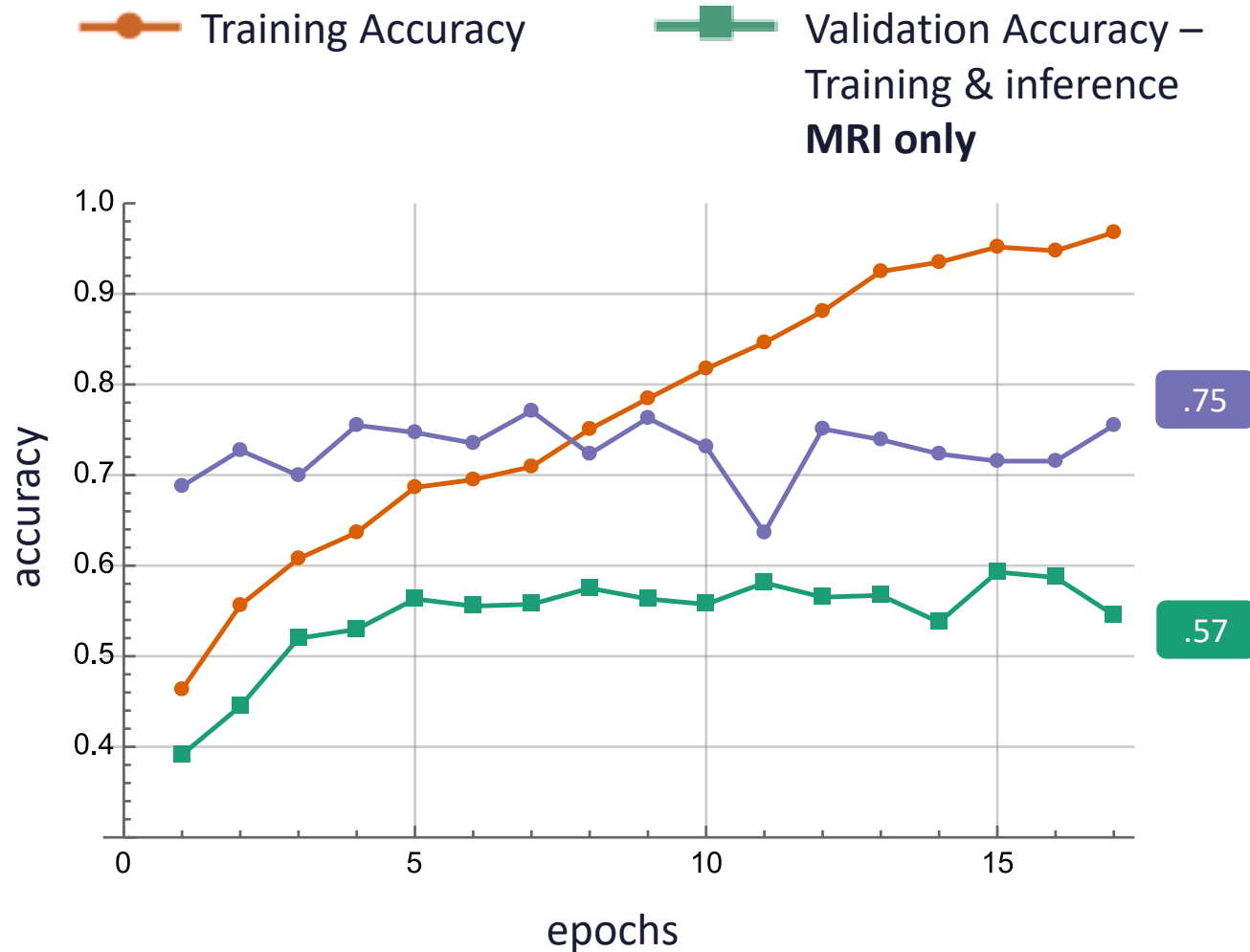
Using the latest **transformer-based** modelling approaches we **extended the model by multiple modalities**



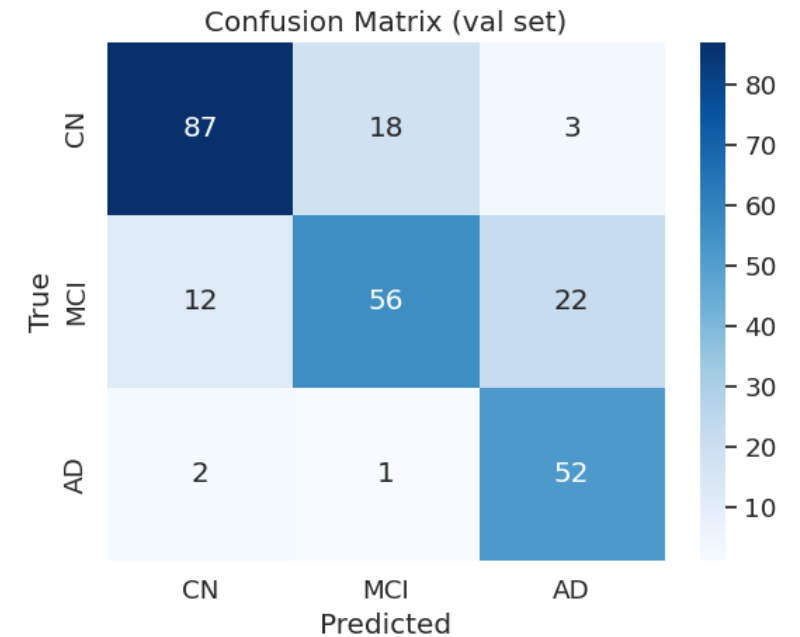
Which can actually be **extended by any modality**



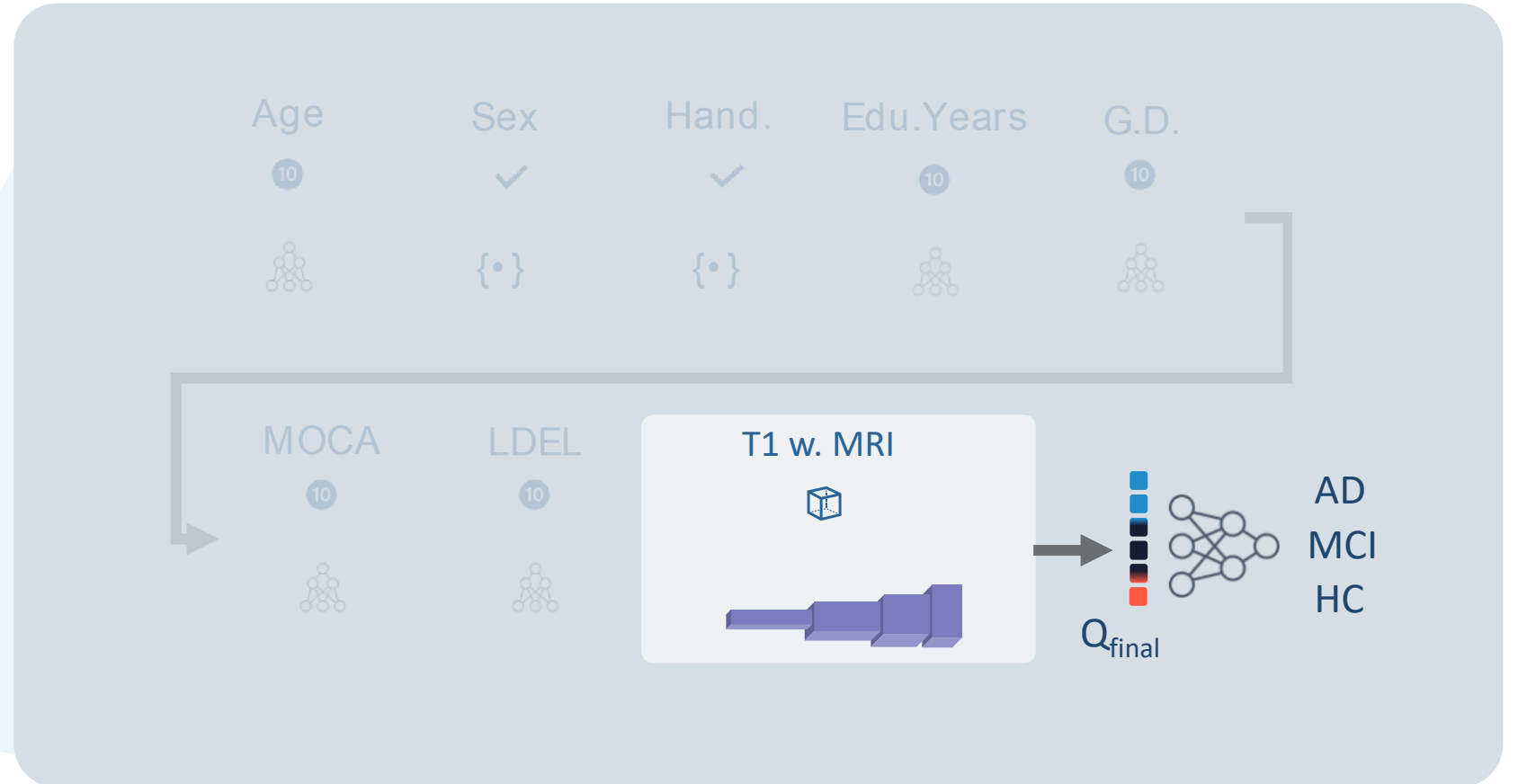
This showed a **strongly improved performance**



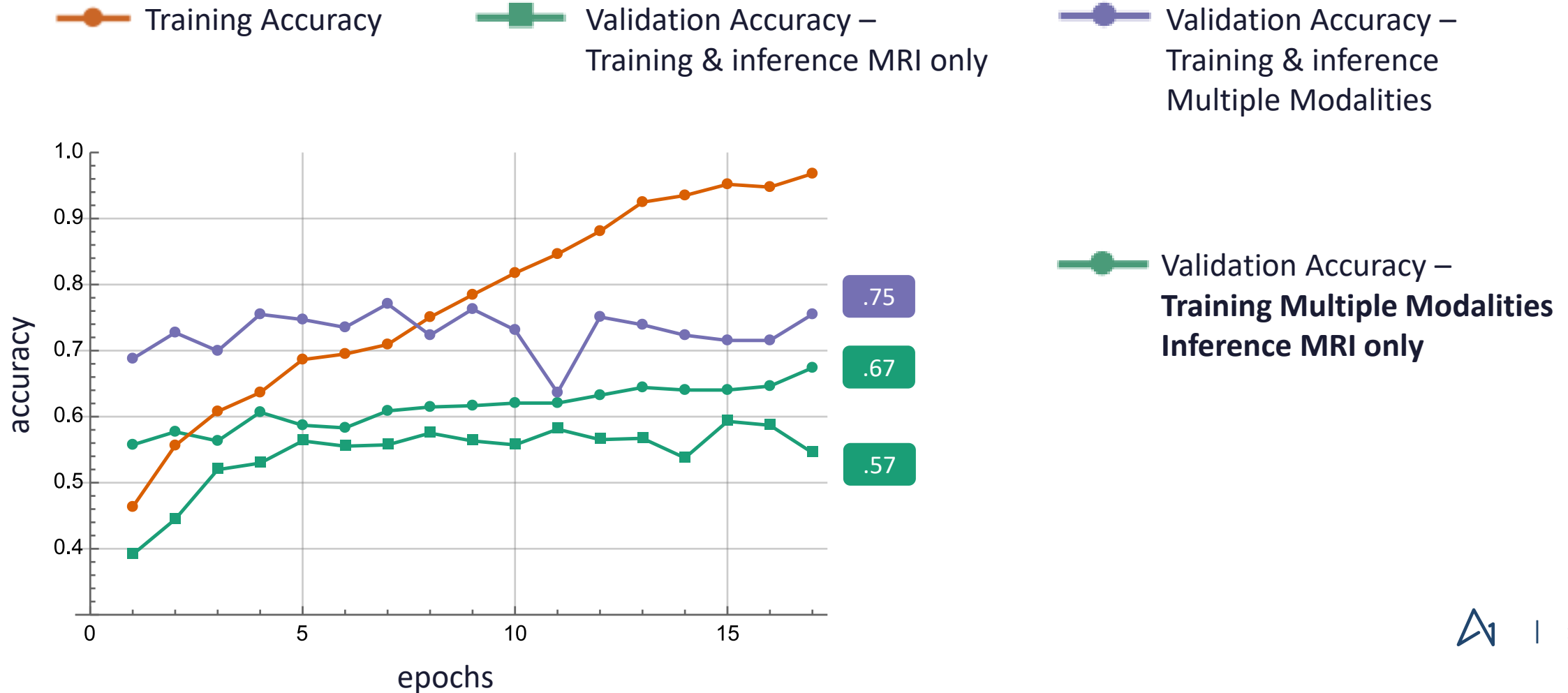
Validation Accuracy – Training & inference **Multiple Modalities**



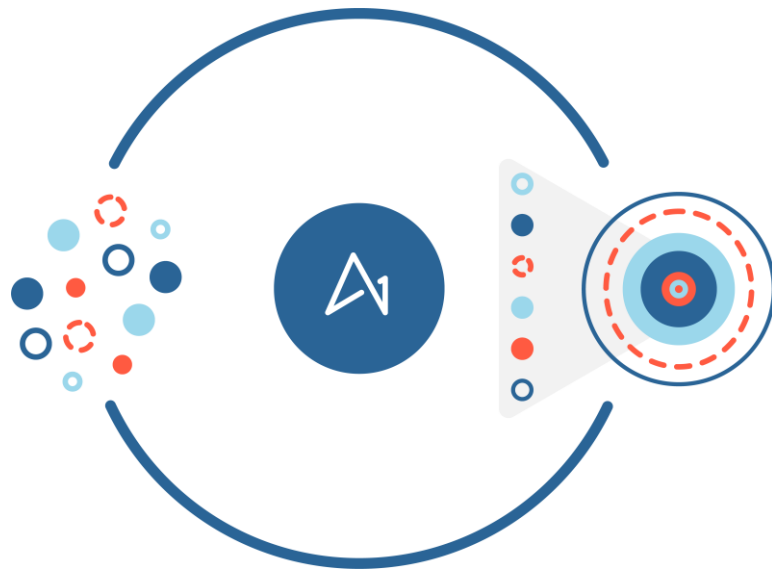
Even more powerful for missing data scenarios – **at inference only one modality (e.g. MRI) can be used**



Training with multiple modalities increased performance on even single-modality inference!



Outlook → Data model x AI engine **de-risk clinical trials in NDD**



Biomarker Enhancement



Eligibility Assessment



Endpoint Selection

Evaluate them based on their added value in progression prediction

Randomization

predict disease progression
with multimodal transformer model



AICURA provides at least **20% cost & time savings in clinical trials**

De-risking Strategies

enrich patient cohorts
for clinical trials with data-driven
insights

predict patient response
with AI-driven biomarkers

automate the analysis
of images and data



IMPACT:



- ✓ REDUCED TRIAL COSTS*
- ✓ IMPROVED PROBABILITY OF SUCCESS
- ✓ FASTER TIME TO MARKET

*Based on internal calculations the total cost reduction in the 3 phases of trials. Ph1, 2, 3. We save 20% of the cost of each of the phases. Avg cost of trials: Ph1 : USD 3.8M - AICURA delivers savings ~ USD 760 K, Ph2 : USD 13M - AICURA delivers savings ~ USD 2.6 M, Ph3 : USD 20M - AICURA delivers savings ~ USD 4.0 M



AICURA’s platform generates **recurring revenue** from biopharma subscriptions and promotes data sharing across partners

	AICURA Generates Revenue		Revenue Share Customer x AICURA
	Subscription	Value-Added	Data-Sharing
biopharma	✓	✓	✓
Health Care Providers	Free	✓	✓
Research Institutes	Free	✓	✓



Join AICURA's **data x AI ecosystem**

Connecting all healthcare stakeholders to transform healthcare



Accelerate your clinical
research with **data x AI**



Janis Reinelt

Chief Medical Officer

Janis.Reinelt@aicura-medical.com

AICURA medical

Bessemerstraße 22

12103 Berlin, Germany

www.aicura-medical.com