

INNOVATION INSIGHT

Establishing Trust in Healthcare AI: A Decade of Insights



Pau Rué

PhD, VP of Artificial Intelligence
Infermedica



Establishing Trust in Healthcare AI A Decade of Insights



Pau Rué
VP of Artificial Intelligence





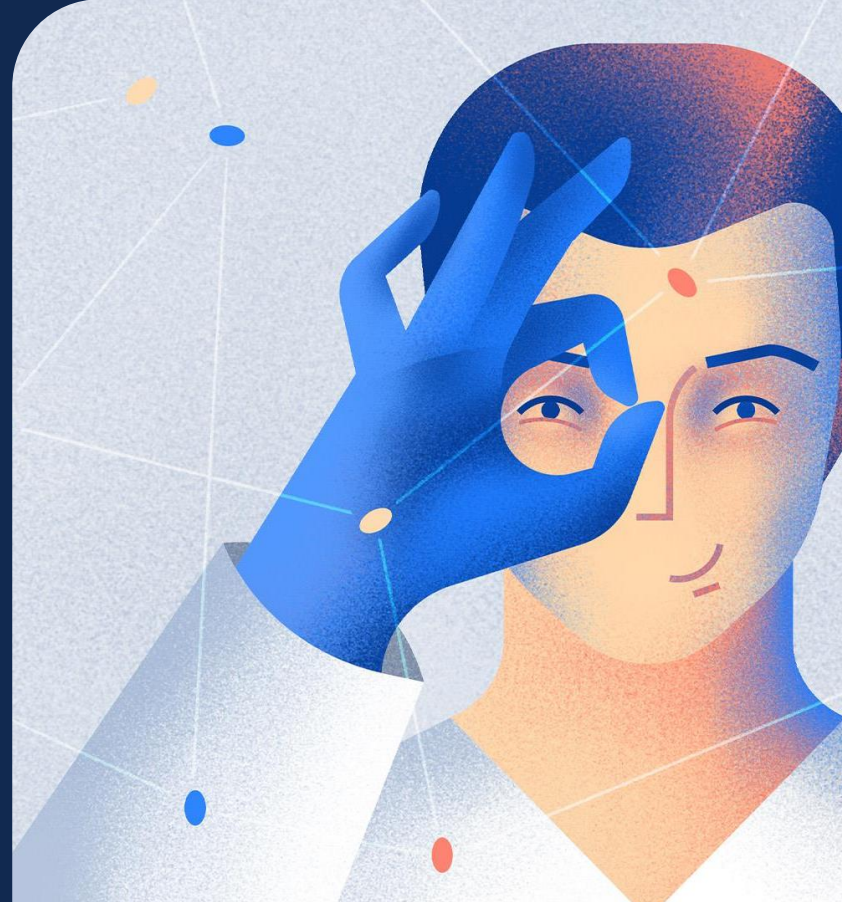
Barriers to Trust in AI in Healthcare





Main challenges to overcome

- Lack of clinical validation
- Lack of explainability
- Unpredictable and uncontrollable behavior





The global explosion of LLMs





Approaching trust in AI

- Extensive clinical validation
- Certified medical device
- Real world use



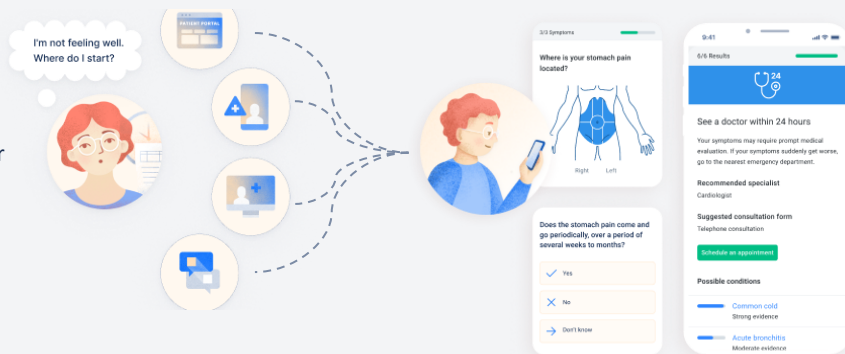
**Our mission is to make healthcare
accessible, convenient and
affordable by automating primary
care, from symptom to outcome.**



1

Start Here

From portals to campaigns, your patients can find you anywhere



2

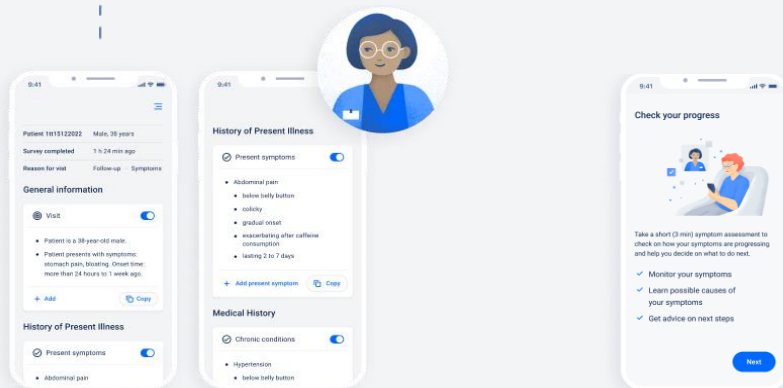
Virtual Triage

Get a complete patient picture so they get the right care

3

Intake/Data Collection

Save time by transferring patient data straight to the doctor's office



4

Follow-up

Engage patients with post-visit check ins

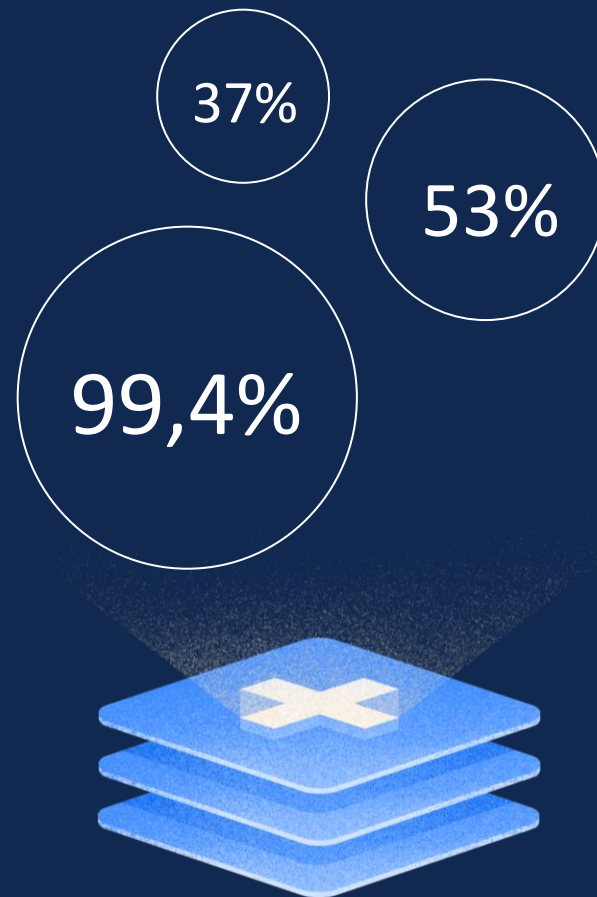
**We've helped 100+
of organizations since
2012**





We do that by:

- Reducing the number of ER visits – based on our case study by **53%**
- Expanding telehealth usage – **37%** redirected to telehealth
- All with exceptional user satisfaction of 80% while covering **99,4%** reported by our clients' users symptoms



Certified safety & efficacy



Select modules are marked
as class 1 medical devices



Compliant with General Data
Protection Regulations



Compliant with standard
for patient data protection



Certified Quality Management
System in accordance with PN-EN ISO
13485: 2016



Our processes and Development
Procedures comply with ISO 27001

Infermedica's approach to build trust



\$14M+



**60
physicians**



**95% engine
accuracy**

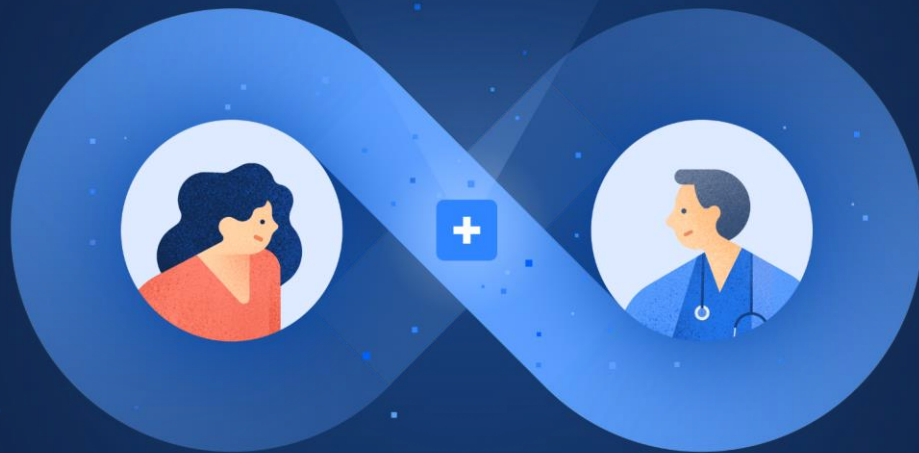


**90,000+
hours**



**100+
companies**

What is important to gain trust?

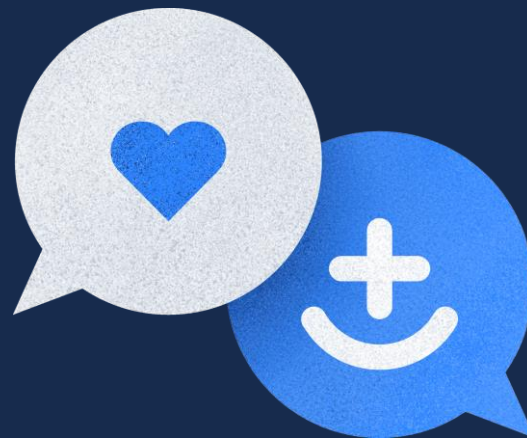




**Meet us
at booth C44
Thank you!**



Pau Rué
VP of Artificial Intelligence



Infermedica