

HEADLINER

The importance of continuous access to patient data for AI Innovation in Healthcare



Prof Dr Milan Petković

Head of AI & Data Science R&D
Connected Care

Philips

PHILIPS

www.philips.com

The Power of Prediction

Prof. dr. Milan Petković

Philips

September 2023

innovation  you



Products come and go ...
Technologies change ...

But Philips is still
about one thing:
Creating meaningful
innovation that improves
people's lives

It is our purpose to improve people's health and well-being through meaningful innovation.

We aim to improve the lives of 2.5 billion people per year by 2030.*

* 2 billion by 2025



Helping our customers address their challenges



**Better
health outcomes**



**Improved
patient experience**



**Improved
staff experience**



**Lower
cost of care**



Flagship innovations across our portfolio will drive our growth

IntelliVue

Dynamic care solution

Alarm fatigue:
40% total alarm reduction¹

Workflows:
Reduced time to process from
5 minutes to 3.9 seconds²

1. Team-Based Interventions to Reduce the Impact of Nonactionable Alarms in an Adult Intensive Care Unit. Justin Yeh 1, Ruth Wilson, Lufei Young, Lisa Pahl, Steven Whitney, Kevin C Dellsperger, Pascha E Schafer
2. Results from baseline and post time & motion studies conducted by Philips and Jackson Health internal teams in the high acuity units (ED, TICU, CCU) | 2.



Flagship innovations across our portfolio will drive our growth

Philips BioTelemetry

4.6x more patients
with atrial fibrillation detected by MCOT
compared to ILR alone¹

8x lower costs achieved
with improved detection rates
and reduction of secondary stroke risk
due to new anticoagulant use in subjects
with MCOT-patch-detected atrial
fibrillation¹

1. Medic G, Kotsopoulos N, Connolly MP, et al. Mobile cardiac outpatient telemetry patch vs implantable loop recorder in cryptogenic stroke patients in the US – cost-minimization model. Med Devices (Auckl). 2021;14:445-458. doi:10.2147/MDER.S337142



Flagship innovations across our portfolio will drive our growth

MR

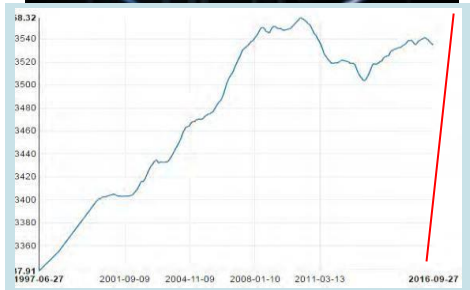
0 helium refill over lifetime

Up to 53% lower power consumption per patient scan (32% on average)¹

1. Philips SmartSpeed power consumption versus Philips SENSE based scanning. Based on COCIR and in-house simulated environment. Results can vary based on site conditions

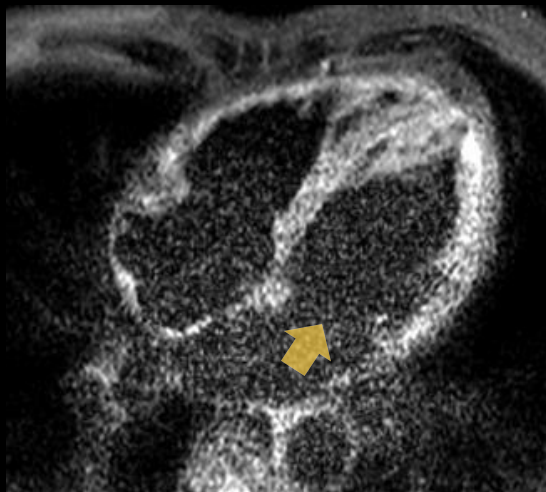


Artificial Intelligence - AI

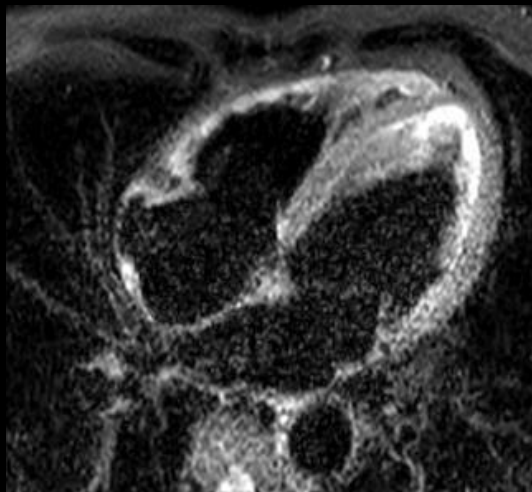


Large language models to mimic a human conversationalist

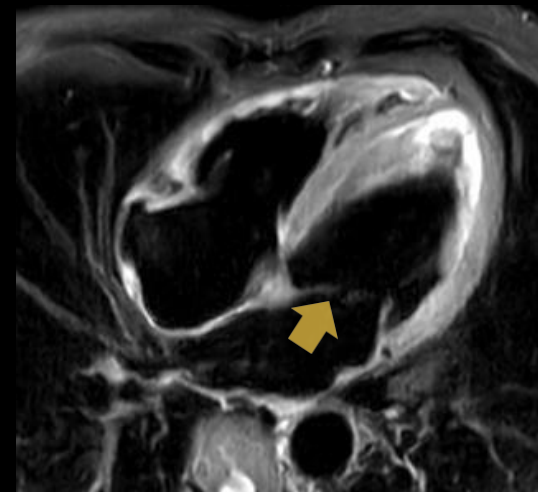
SmartSpeed AI: building on C-SENSE



SENSE 6.0



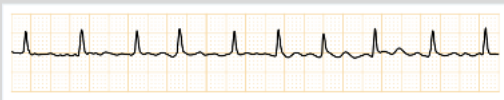
Compressed-SENSE 6.0



Complemented with AI:
SmartSpeed

FDA 510K, April 2022

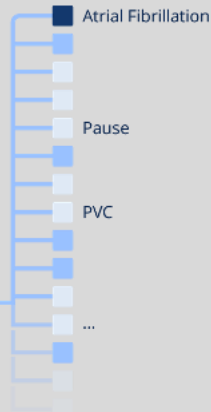
Delineated ECG



Convolutional Neural Network



Prediction probabilities



Binary outcome

Atrial Fibrillation

MACHINE LEARNING FOR ECG DIAGNOSIS AND RISK STRATIFICATION OF OCCLUSION MYOCARDIAL INFARCTION
Nature Medicine

NEAR-TERM PREDICTION OF LIFE-THREATENING VENTRICULAR ARRHYTHMIAS USING ARTIFICIAL INTELLIGENCE-ENABLED SINGLE LEAD AMBULATORY ECG
Hearth Rhythm Society congress 2023



High-quality ECG diagnostics

Medical grade AI technology powering our cloud-based arrhythmia diagnostic platform



IntelliVue GuardianSoftware

Detecting early signs of
patient deterioration in
general care settings

IntelliVue GuardianSoftware with early warning scoring (EWS) automatically acquires patient vital signs, calculates an early warning score customized to the individual needs of the hospital, displays it at the point of care, and notifies responsible caregivers.

A prospective study using Philips IntelliVue GuardianSoftware supports the use of an automated EWS system with notifications to provide improvements in key patient-centered clinical outcomes.



Hospital mortality
including readmissions¹



ICU readmissions
rates¹



Severe adverse
events¹

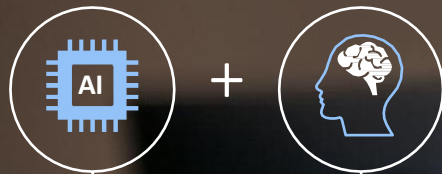


Cardiopulmonary
arrests¹



ICU mortality of patients
transferred to the ICU¹

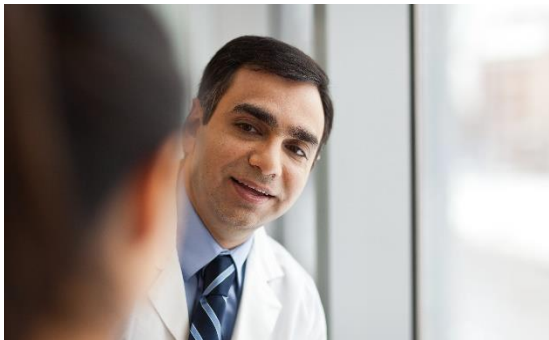
1. Subbe, C.P., Duller, B. & Bellomo, R. Crit Care (2017) 21: 52. doi:10.1186/s13054-017-1635-z



We combine the power of AI with deep clinical knowledge to create solutions that integrate into the workflows of healthcare providers and people's daily health routines.



Driving AI at scale through collaborative ecosystems



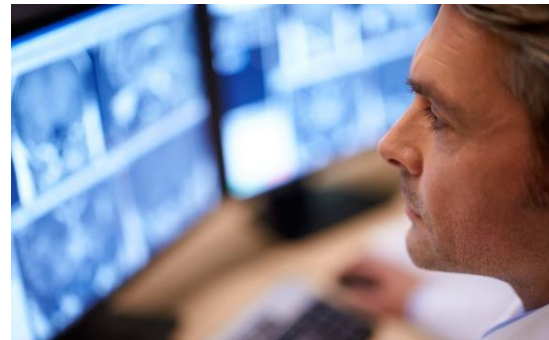
Long-term strategic partnerships

We innovate with leading medical centers to advance AI-enabled solutions around the globe



Integrating third-party AI offerings

We integrate validated third-party AI applications into our solutions for seamless workflow support



AI marketplace based on a cloud-based platform

We enable healthcare providers to easily implement AI apps into their workflows – including apps from third parties – via a common cloud-based platform

Key take-aways

- With AI, we can help people take better care of their health and well-being, and **enable healthcare providers to do what they do best:** prevent, diagnose, treat, and monitor
- For AI to support the **human experience** in healthcare, it needs to **integrate into the workflows** of healthcare providers and people's daily health routines
- Scaling AI in healthcare requires a human-centered approach, based on a strong foundation of trust – while promoting increased data sharing, interoperability, and **ecosystem partnerships** that enable seamless workflow integration

