

HEADLINER

AI4HealthyCities – better evidence to address health inequities



Peter Speyer

Head of Data, Analytics & AI
Novartis Foundation



The Novartis Foundation

AI4HealthyCities

Better evidence to address health inequities

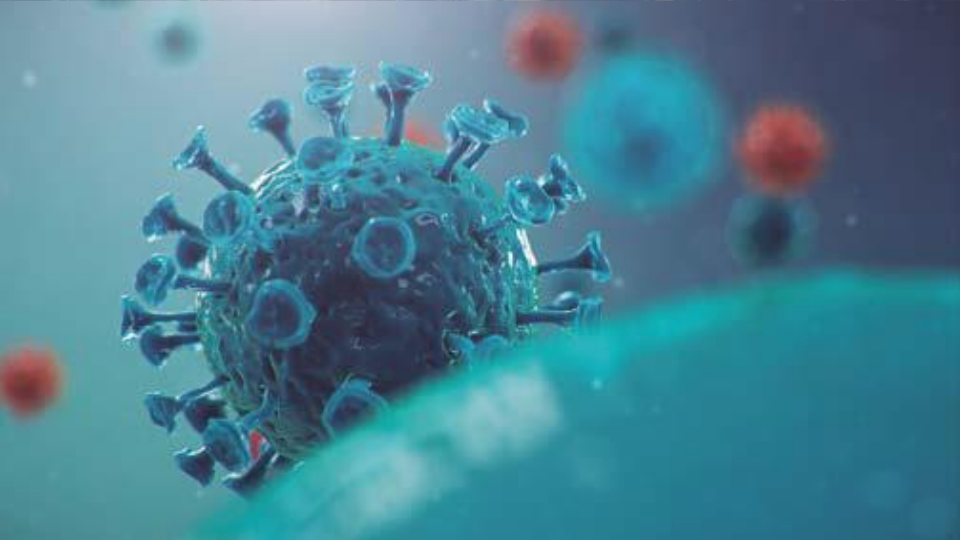
Peter Speyer
Head of Data & Analytics

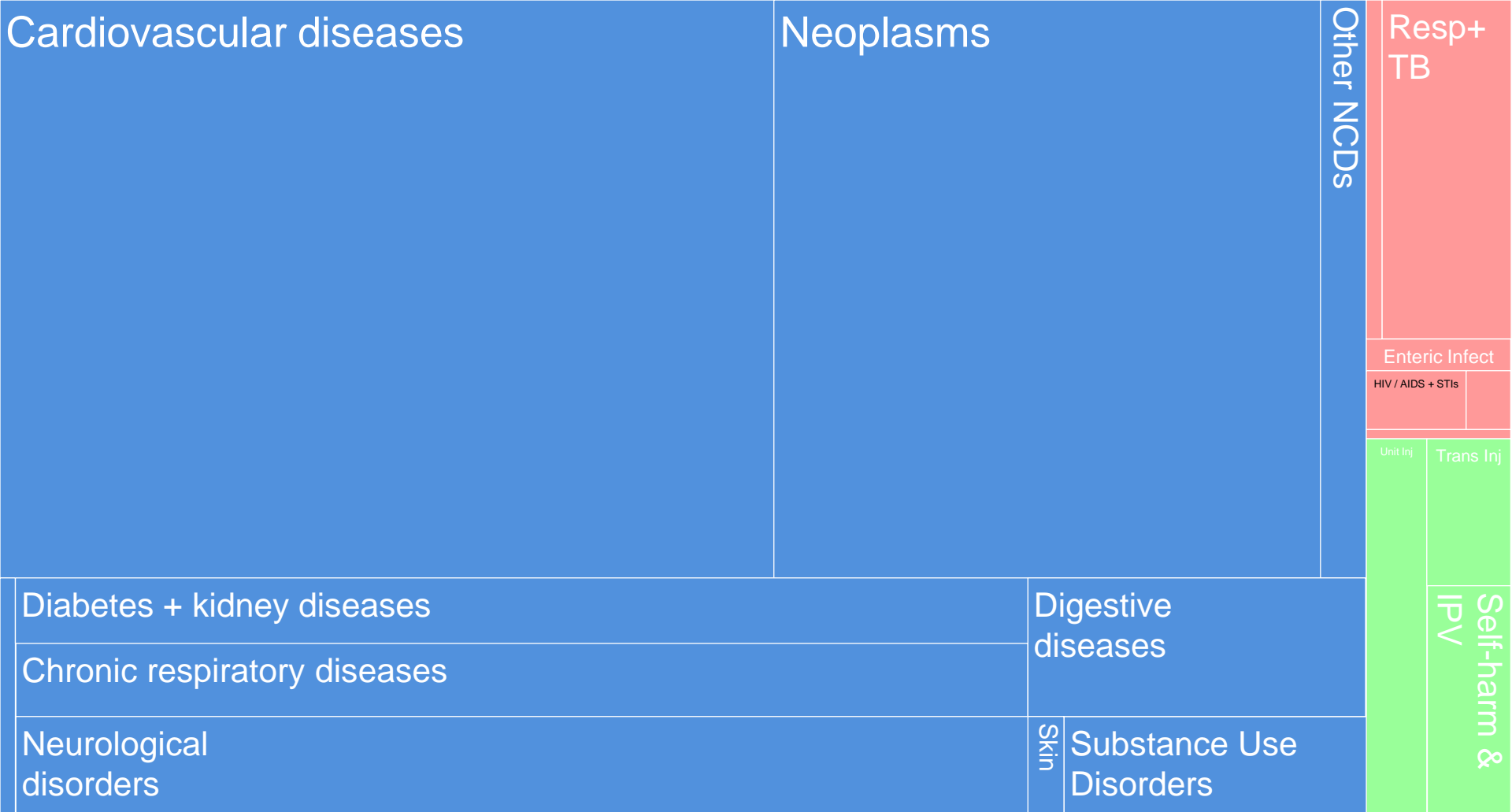


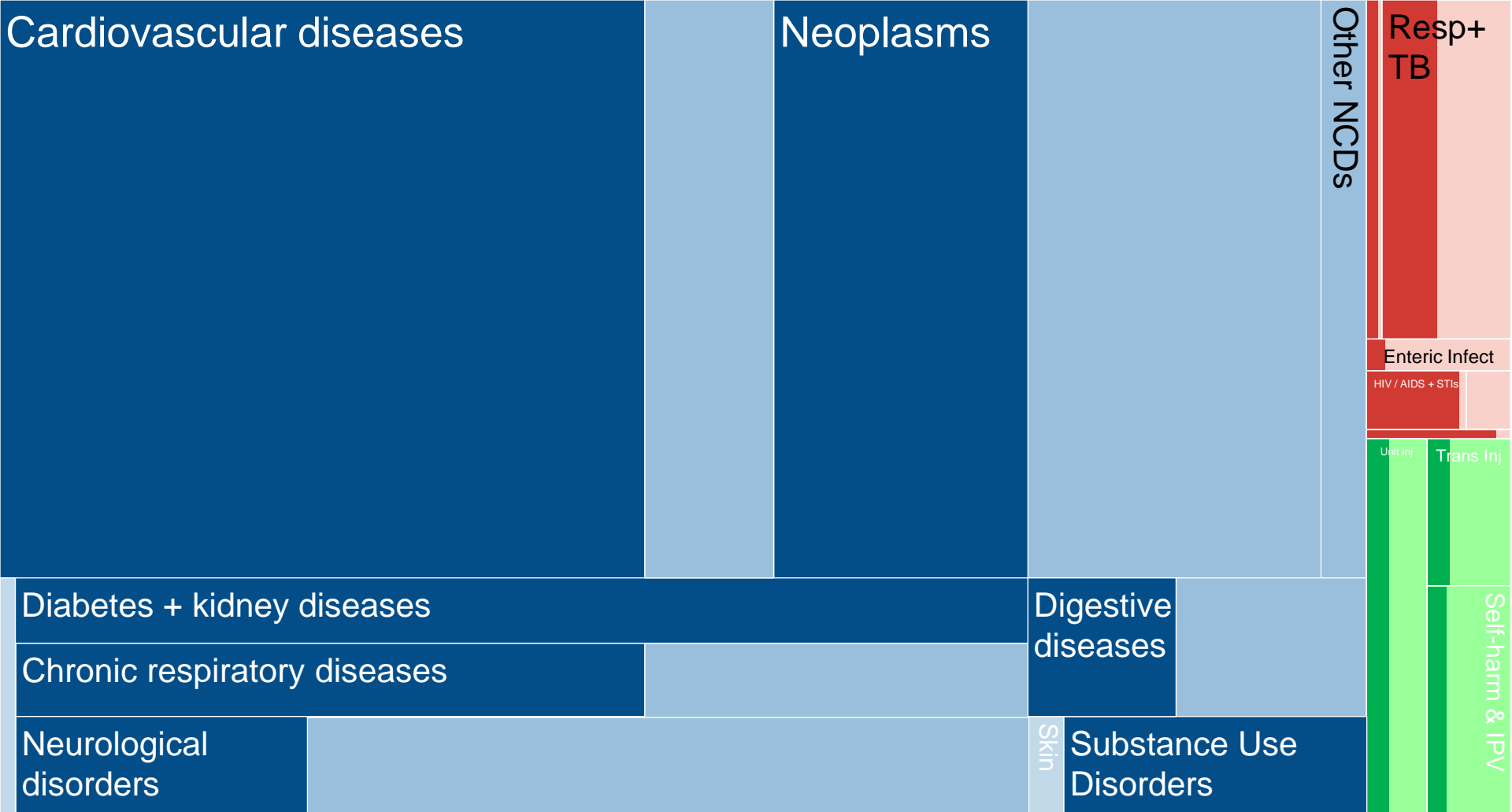
NOVARTIS

The Novartis
Foundation









Precision Health



“Givens”



Social Determinants



Healthy Behaviors



Exposome



**Health
+
Risks**

AI4HealthyCities



**Evidence
review**



**City
collaboration**



**Expert
opinion**

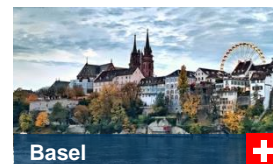


**Health system
performance**

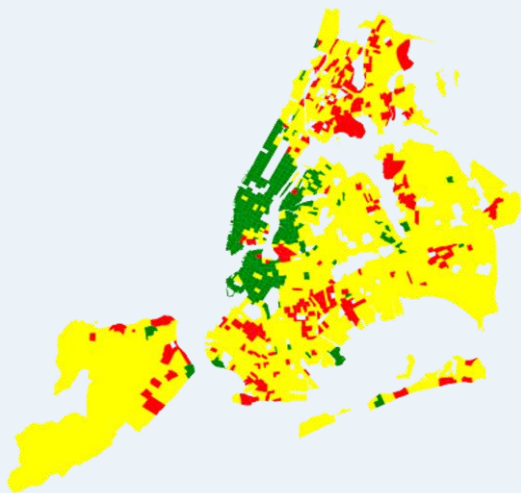
AI4HealthyCities Expert Council

Partnering with data rich cities

Current partnerships



Cardiovascular disease risk

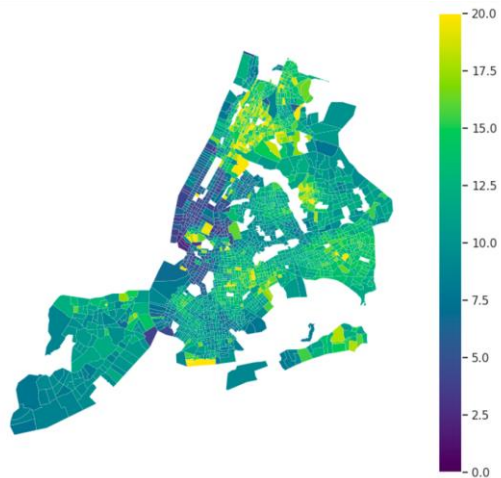


Characteristics	West Village, Manhattan	Mott Haven, Bronx
% Adults without higher education	5%	31%
% Adults with long commutes	2%	47%
% Using Medicaid	8%	29%
Median rent costs	\$2,671	\$1,358
% Households without internet	7%	32%

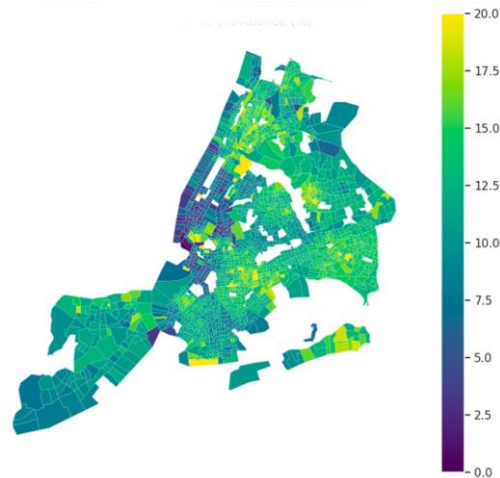
Diabetes prevalence



Observed diabetes prevalence (%)



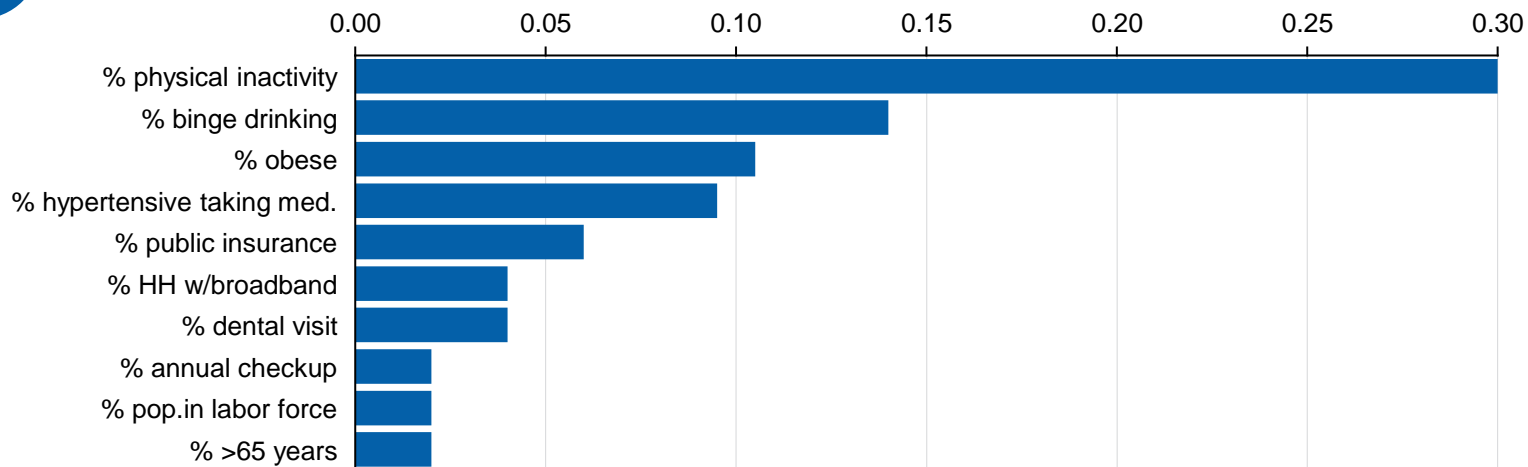
Predicted diabetes prevalence (%)



Drivers of diabetes



Relative average contribution to the prediction



Challenges



Find & access



Sample sizes



Longitudinal data



Linkage



Innovation

Measurement



Linkage



Privacy



Analytics



Evidence

