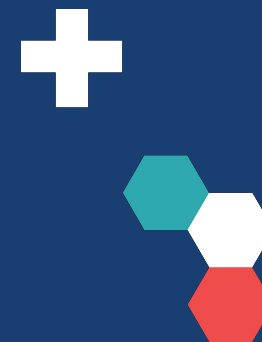


The Social Care Challenge



Intelligent Health, London 2022

April 7th

Ian Newington



The NIHR

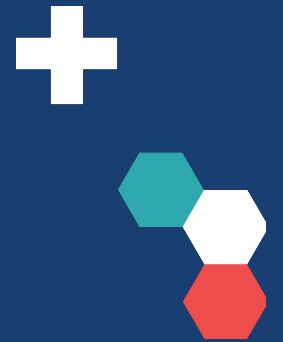
- Name change on April 6th 2022
 - Mapping onto DHSC
 - Reflecting the ambition to fund more in Social Care
- Have already spent >£200m on Social Care research
- Key investments:
 - School for Social Care Research
 - RfSC (Research for Social Care) Programme
 - Increased funding through other programmes
 - Health & Social Care Delivery Research (HS&DR)
 - Public Health Research

Today's Aim

- Hear 3 perspectives on social care challenges
 - The Health Foundation – Ellen Coughlan and Jenna Collins
 - Care England – Louis Holmes
 - West Midlands ADASS – Abby Vella
- Opportunity to discuss the issues around the table
- A chance to sign up for further discussion
 - Information from NIHR – funding calls etc
 - Follow-on event(s)
 - Continue the conversation
 - Networking with key players

NIHR

National Institute for
Health and Care Research



Ian.Newington@nihr.ac.uk

