



**RADICAL**  
VENTURES

**AI Eats Software:  
Next Wave of AI Commercialization**



**Parasvil Patel**

**Partner, Radical Ventures**

KKR

BCG

BOSTON  
CONSULTING  
GROUP



# Radical Thesis: AI will Impact Everything

Radical portfolio companies solving global challenges



AI Infrastructure

co:here

Twelve Labs

UNTETHER AI



Health

Genesis  
Therapeutics

Ubenwa

SYNEX  
MEDICAL

Liŝa Health

UNLEARN

SIGNAL 1



Housing

Promise Robotics



Supply Chain

covariant

aaabi



Climate

CLIMATEAi

chemix

pixxel



# Radical's deep expertise in AI

Investing in AI since **2017**

Interact with **>2,000** startups every year

Portfolio of **>50** AI startups



# Next decade of AI commercialization



Full stack AI  
~2012-2017



AI for X  
~2017-2022

UNTETHER AI



Ambient AI  
~2023+



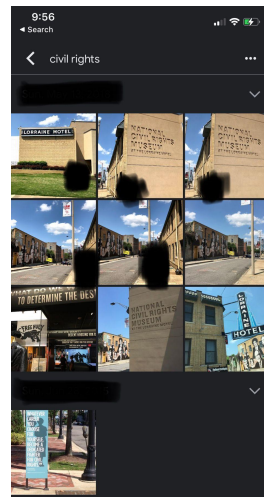
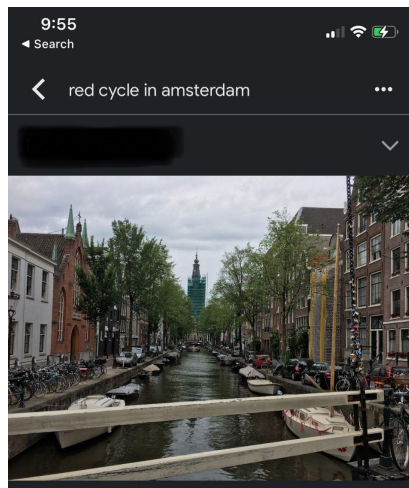


# 2023+: Ambient AI takes off

## What is the ambient AI experience?

- Integrated into the workflow
- Intuitive to use
- Improves productivity

## Google Photos - an illustrative example



**Enterprise Software:** Copilot for everything e.g. BI by query for CRM and ERP

**Healthcare:** drug discovery and healthcare diagnosis



# Riding this wave requires us to build and use AI products differently

## Build and improve AI utilities

Develop models for all use cases:

- General purpose vs. domain specific
- Multimodal
- Cloud vs. edge

Enable ease of use

## Reimagine products and businesses

Educate the developer

Leverage domain knowledge

Drive business strategy

## Think deliberately about AI ethics

Invest in Responsible AI

Support forward thinking regulation





Thank You

parasvil@radical.vc  
@parasvil

